

## WADI one EMC-cable gland

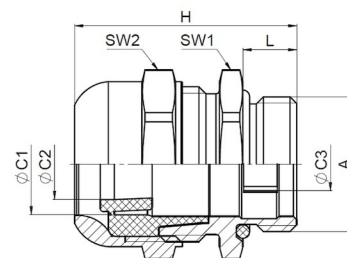
K151-1xxx-zz

Dome nut	Brass CuZn39Pb3, nickel-plated
Sealing insert	TPE TPS
Gland body	Brass CuZn39Pb3, nickel-plated
O-ring	Nitrile rubber NBR
Contact spring	Stainless steel 1.4310
Connecting thread	metric, as per EN 60423




### Properties


	<ul style="list-style-type: none"> <li>• for cables with shielding</li> <li>• quick and easy EMV connection of the cable shield via the contacting spring with the gland body and the housing potential</li> <li>• large-area sealing protects the cable</li> <li>• high cable anchorage, partially type B</li> <li>• wide sealing and clamping range</li> <li>• the inner sealing ring can be removed easily for larger cables</li> <li>• high UV, ozone and weather resistance</li> </ul>
Temperature range	-40 °C / +100 °C (dynamic)
Protection grade	IP66 / IP68 up to 15 bar (30 min.) / IP69
Test standard	EN 62444
VDE licence	40050445
DNV GL Certificate	TAE00003VR
Comment	details about test results - see annex



### Features

Connecting thread standard length

A	ØC	Ø C2	Ø C1	ØE	L	SW1	SW2	H	 VPE	Part No.
M12x1 ,5	3 - 8	3 - 5	5 - 8	3,5 - 5,5	6,5	16	16	25,5	100	K151-1012-00

A	ØC	Ø C2	Ø C1	ØE	L	SW1	SW2	H	 VPE	Part No.
M16x1 ,5	5 - 10,5	5 - 7,5	7,5 - 10,5	5,5 - 8	7,0	20	20	31,5	100	K151-1016-00
M20x1 ,5	8 - 15	8 - 10,5	10,5 - 15	8 - 11	8,0	25	25	33	50	K151-1020-00
M25x1 ,5	12,5 - 20,5	12,5 - 15,5	15,5 - 20,5	10 - 15	8,0	32	32	35,5	50	K151-1025-00
M32x1 ,5	17 - 25,5	17 - 20,5	20,5 - 25,5	13 - 20	9,0	36	36	40,5	25	K151-1032-00
M40x1 ,5	24 - 33	24 - 29	29 - 33	20 - 27	9,0	45	45	43	10	K151-1040-00
M50x1 ,5	31 - 42	31 - 37,5	37,5 - 42	26 - 34	10,0	55	55	47,5	5	K151-1050-00
M63x1 ,5	40 - 53	40 - 46	46 - 53	34 - 44	10,0	70	70	53	5	K151-1063-00

\*ØE = Diameter of the cable shield