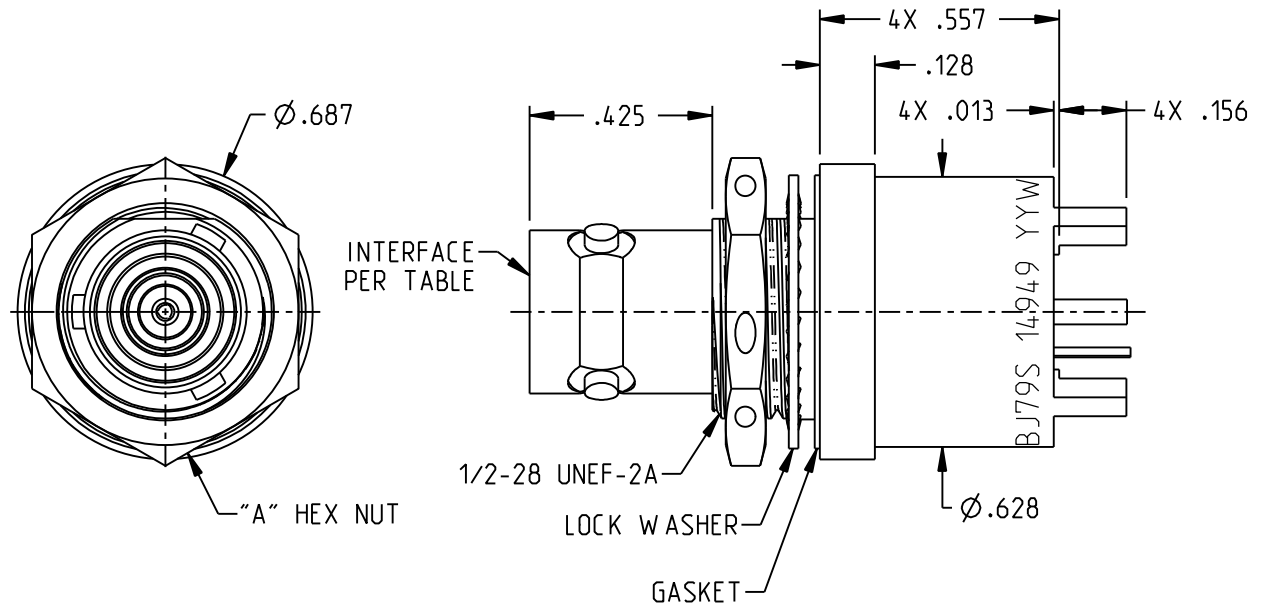


MODEL NUMBER	"A"	INTERFACE PER	SH
CBBJ79	9/16	MIL-STD-348 FIG. 201-2	1
CBBJ79S	5/8 w/3X ϕ .047 SAFETY WIRE HOLES		
CBBJ79TL	9/16		
CBBJ79TLS	5/8 w/3X ϕ .047 SAFETY WIRE HOLES		
CBBJ79FL	9/16		
CBBJ79FLS	5/8 w/3X ϕ .047 SAFETY WIRE HOLES		
CBBJ379	9/16	MIL-STD-348 FIG. 202-2	2
CBBJ379S	5/8 w/3X ϕ .047 SAFETY WIRE HOLES		
CBBJ79TL-1M	9/16	MIL-STD-348 FIG. 201-2	2
CBBJ379-1M	9/16	MIL-STD-348 FIG. 202-2	



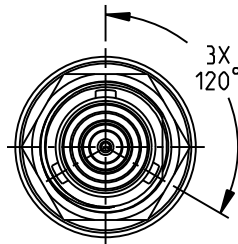
CBBJ79S SHOWN
UNLESS SPECIFIED DIMENSIONS
COMMON TO ALL MODEL NUMBERS

NOTES: UNLESS OTHERWISE SPECIFIED.

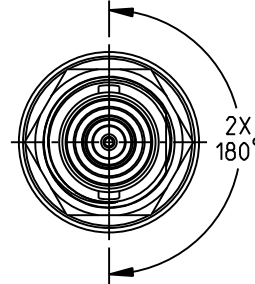
- MATERIAL & FINISH:
 - BODY: TIN PLATED BRASS
 - INSULATOR & DIELECTRIC: PTFE (TEFLON)
 - INTERMEDIATE CONTACT: GOLD PLATED BRASS
 - CENTER CONTACT: GOLD PLATED BERYLLIUM COPPER
 - GASKET: SILICONE RUBBER
 - MOUNTING HARDWARE: GOLD PLATED COPPER ALLOY

- ELECTRICAL:
 - FREQUENCY (MAX): 500 MHZ
 - IMPEDANCE: NON-CONSTANT
- PANEL NUT TORQUE (MAX): 35 INCH POUNDS
- PANEL THICKNESS (MAX): .109

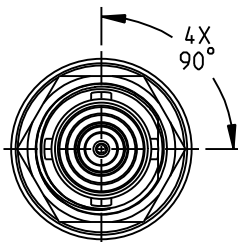
5. EXAMPLE OF COMPLETE MODEL NUMBER
CBBJX79YYZ-AA
S - SAFETY WIRE HOLES
BASIC MODEL NO (PRE TABLE)



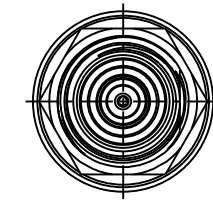
CBBJ79 SHOWN



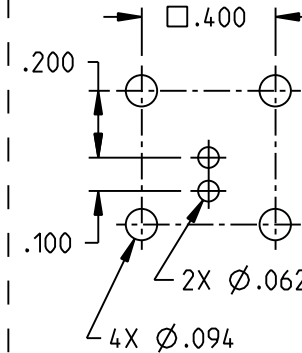
CBBJ79TL SHOWN



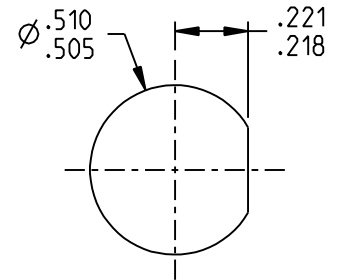
CBBJ79FL SHOWN



CBBJ379 SHOWN



RECOMMENDED
MTG HOLE PATTERN



RECOMMENDED
PANEL CUTOUT

	3RD ANGLE PROJECTION 	TROMPETER			
	RoHS2 <input checked="" type="checkbox"/> 2015/863/EU	Title: TRB/TRT BULKHEAD CIRCUIT BOARD JACK	Model No.: CBBJX79YYZ		
<small>UNLESS OTHERWISE SPECIFIED UNITS: INCH</small> .XX ±.02 .XXX ±.010 ANGLES ±2°		Size: A	DO NOT SCALE DRAWING	Date: 9/22/2021	Sheet: 1 OF 2

This PROPRIETARY Document is property of Cinch Connectivity Solutions. It is confidential in nature, non-transferable, and issued with the clear understanding that it is not to be copied or used without permission and is returnable upon demand.

INTERPRET DRAWING IN ACCORDANCE WITH ASME Y14.5-2009.