

6

5

4

3

2

1

APPROVED: _____
DATE: _____ TITLE: _____

Rev	AWO #	Description	Date	Appr
-		RELEASED	9/12/16	

D

D

C

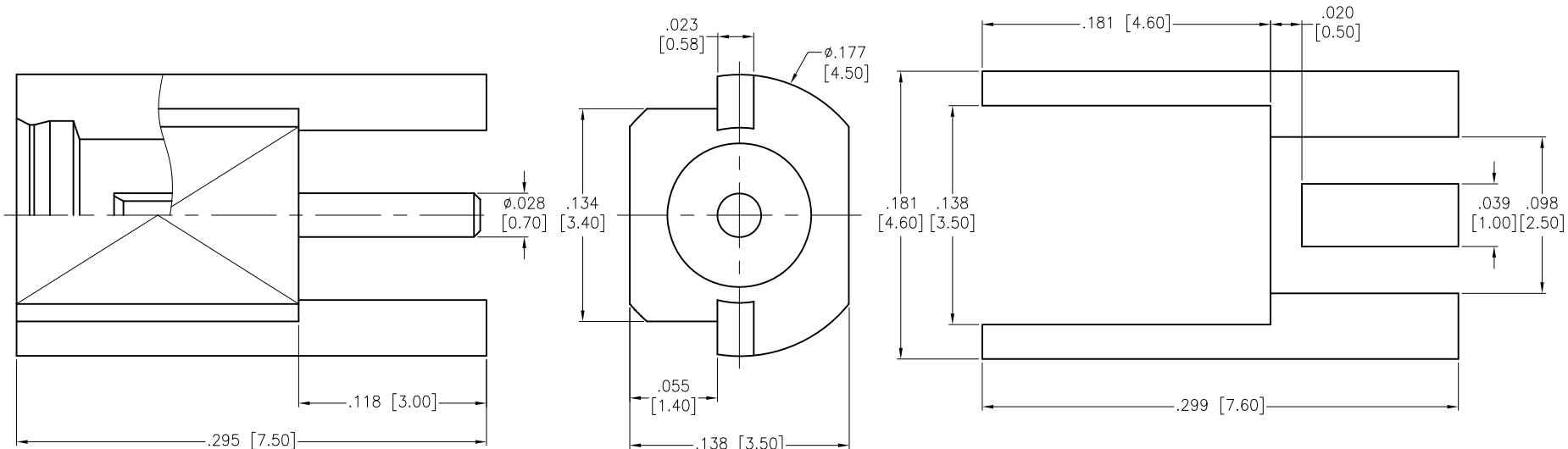
C

B

B

A

A



RECOMMENDED PCB LAYOUT

CONTACT PIN	BE CU	GOLD
INSULATOR	PTFE	WHITE
BODY	BRASS	GOLD
DESCRIPTION	MATERIAL	FINISH

SPECIFICATIONS:

Electrical:
 Nominal Impedance: 50 ohms
 Frequency range: 0-6 GHz
 Working Voltage: 170 VOLTS Max
 Proof Voltage: 500 VOLTS
 Temperature Rating:
 Operating temperature: -55°C to +155°C
 Environmental:
 Lead free, RoHS compliant.



UNLESS OTHERWISE SPECIFIED ALL DIMENSIONS ARE INCHES [MM] TOLERANCES: EXCEPT AS NOTED INCHES HOLES		ADAM TECH 909 Rahway Avenue, Union, NJ 07083 Phone: 908-687-5000 Fax: 908-687-5710	
.X ± .10	ϕ .X ± .10		
.XX ± .020	ϕ .XX ± .015	TITLE RF CONNECTOR, TYPE MMCX STR. 50 OHM, EDGE CARD MOUNT JACK	
.XXX ± .015	ϕ .XXX ± .010		
APPROVALS		DATE	
DRAWN	AY	9/12/16	
CHECKED	LW	9/12/16	
APPROVED			
SIZE X	PART NO. RF12-05A-T-00-50-G	REV. -	
REF: S00277T	SCALE: NTS	SHEET 1 OF 1	

6

5

4

3

2

1