

The Environmental Sensing Kit requires the CY3271 Kit for operation. This quick start guide assumes you are familiar with the CY3271, its operation, and programming of PSoC devices. If not, refer to the users guide on the CD.

1



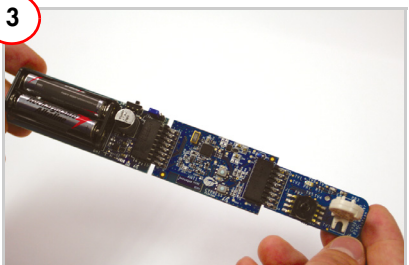
Install all software in the CY3271 kit.

2



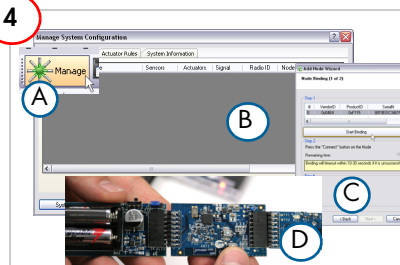
Program the RF Expansion board with *RF\_I2C\_Bridge.hex* from the CD.

3



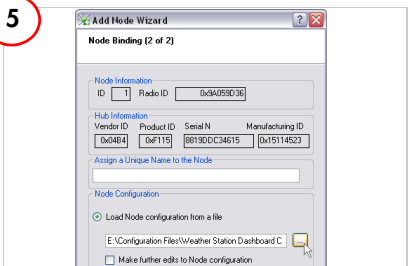
Connect the battery board, RF Expansion board, and the Weather Station board.

4



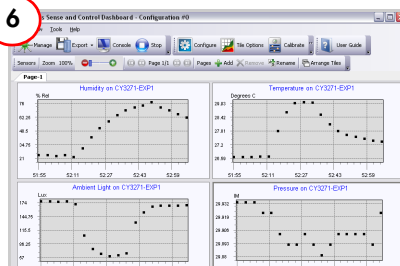
Launch Sense and Control Dashboard and 'bind' the RF Expansion board.

5



Click 'Load Node configuration from a file' and select *Weather\_Station\_Dashboard\_Configuration.xml* from the CD.

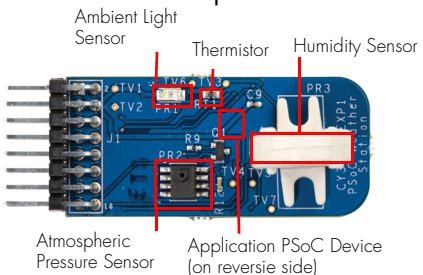
6



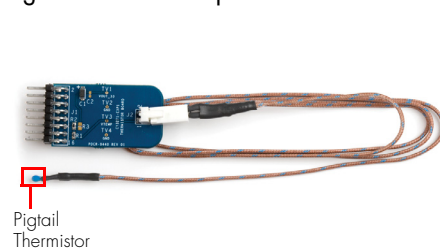
Monitor, chart, and record data from all sensors. See the user guide for other CY3271 projects.

# CY3271-EXP1 EXPANSION KIT QUICK START GUIDE

## Weather Station Expansion Board

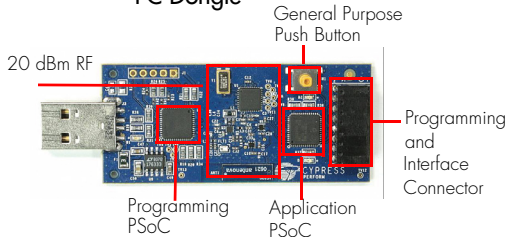


## Pigtail Thermistor Expansion Board

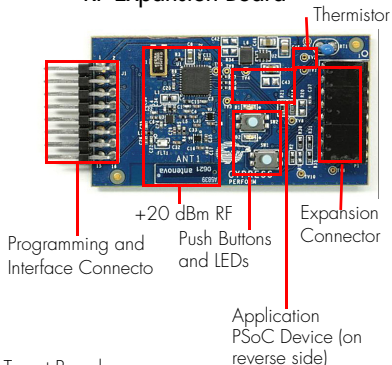


## CY3271 Hardware (Required for Operation)

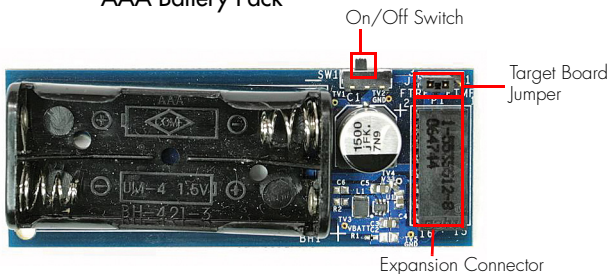
### PC Dongle



### RF Expansion Board



### AAA Battery Pack



For the latest information about this kit, visit  
[www.cypress.com/go/CY3271-EXP1](http://www.cypress.com/go/CY3271-EXP1)

