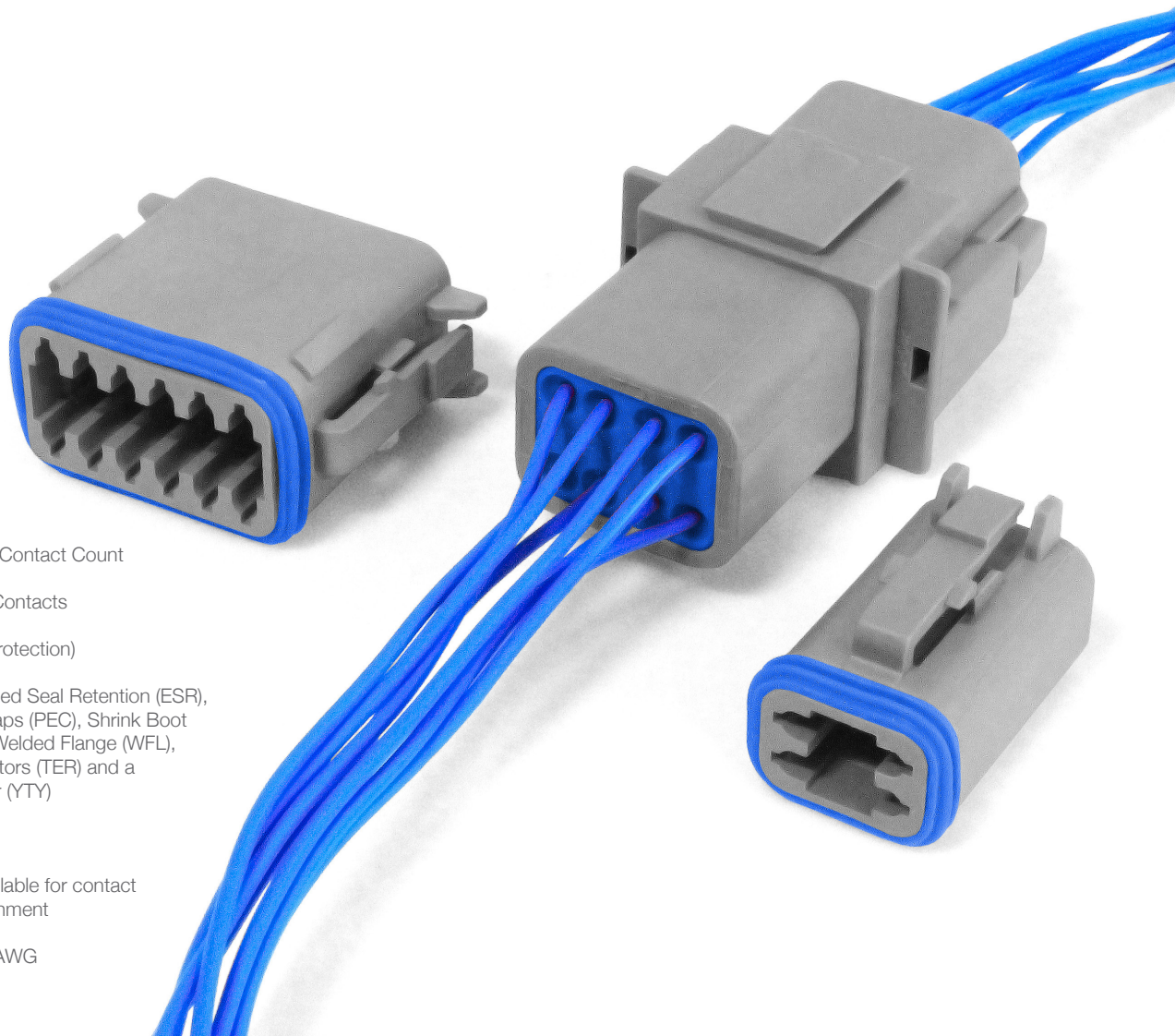


The Bulgin Rectangular Power Connector range offers a reliable, rugged solution for cable to cable applications in harsh environments with its environmentally sealed range of products.

The series has a male and female option, as well as modifications such as enhanced seal retention, protective end caps, shrink boot adapters, welded flange, terminating resistors and a Y-Type connector for the automotive industry.

Key Features:

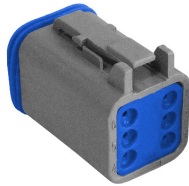
- 2, 3, 4, 6, 8 & 12 Contact Count
- Accepts size 16 Contacts
- IP68 (with Rear Protection)
- Choice of Enhanced Seal Retention (ESR), Protective End Caps (PEC), Shrink Boot Adapters (SBA), Welded Flange (WFL), Terminating Resistors (TER) and a Y-Type Connector (YTY)
- Rated to 13A
- Wedge-locks available for contact retention and alignment
- Accepts 14 - 20 AWG



RECTANGULAR Standard Rectangular Connectors

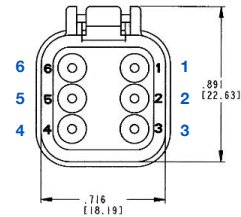


Standard Rectangular Connectors
Male



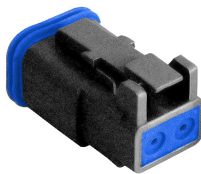
PX0100

- 2, 3, 4, 6, 8 & 12 Contacts
- Male housing
- Socket contacts
- Available in Grey and Black
- Additional options available



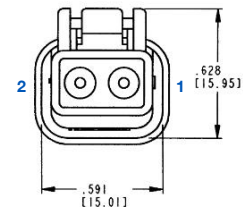
Part Number	Contacts	Key	Termination	Colour	Additional
PX0100S02BK	2	-	Crimp	Black	-
PX0100S02GY	2	-	Crimp	Grey	-
PX0100S03BK	3	-	Crimp	Black	-
PX0100S03GY	3	-	Crimp	Grey	-
PX0100S04BK	4	-	Crimp	Black	-
PX0100S04GY	4	-	Crimp	Grey	-
PX0100S06BK	6	-	Crimp	Black	-
PX0100S06GY	6	-	Crimp	Grey	-
PX0100S08AGY	8	A	Crimp	Grey	-
PX0100S12AGY	12	A	Crimp	Grey	-

Standard Rectangular Connectors
Male - ESR



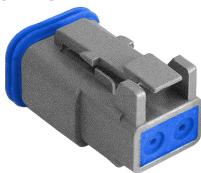
PX0102

- 2 Contacts
- Male housing
- Enhanced seal retention
- Socket contacts
- Available in Black
- Additional options available



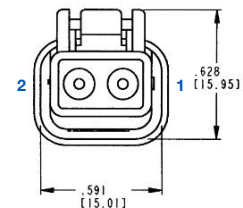
Part Number	Contacts	Key	Termination	Colour	Additional
PX0102S02BK	2	-	Crimp	Black	ESR

Standard Rectangular Connectors
Male - ESR & PEC



PX0103

- 2 Contacts
- Male housing
- Enhanced seal retention & protective end cap
- Socket contacts
- Available in Grey
- Additional options available



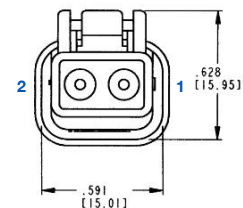
Part Number	Contacts	Key	Termination	Colour	Additional
PX0103S02GY	2	-	Crimp	Grey	ESR & PEC

Standard Rectangular Connectors
Male - ESR & SBA



PX0104

- 2 Contacts
- Male housing
- Enhanced seal retention & shrink boot adapter
- Socket contacts
- Available in Black
- Additional options available



Part Number	Contacts	Key	Termination	Colour	Additional
PX0104S02BK	2	-	Crimp	Black	ESR & SBA

RECTANGULAR Standard Rectangular Connectors

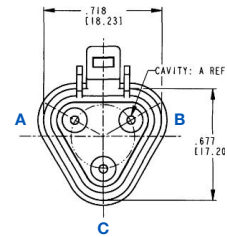


Standard Rectangular Connectors
Male - PEC



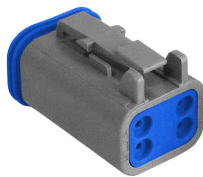
PX0105

- 2, 3, 4, 6, 8 & 12 Contacts
- Male housing
- Protective end cap
- Socket contacts
- Available in Grey and Black
- Additional options available



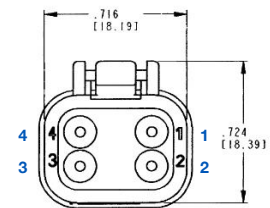
Part Number	Contacts	Key	Termination	Colour	Additional
PX0105S02BK	2	-	Crimp	Black	PEC
PX0105S02GY	2	-	Crimp	Grey	PEC
PX0105S03BK	3	-	Crimp	Black	PEC
PX0105S03GY	3	-	Crimp	Grey	PEC
PX0105S04BK	4	-	Crimp	Black	PEC
PX0105S04GY	4	-	Crimp	Grey	PEC
PX0105S06BK	6	-	Crimp	Black	PEC
PX0105S06GY	6	-	Crimp	Grey	PEC
PX0105S08ABK	8	A	Crimp	Black	PEC
PX0105S08AGY	8	A	Crimp	Grey	PEC
PX0105S12AGY	12	A	Crimp	Grey	PEC
PX0105S12ABK	12	A	Crimp	Black	PEC

Standard Rectangular Connectors
Male - SBA



PX0108

- 2, 3 & 4 Contacts
- Male housing
- Shrink boot adapter
- Socket contacts
- Available in Grey
- Additional options available



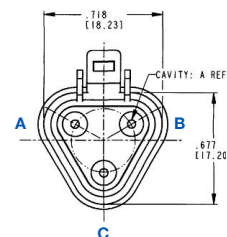
Part Number	Contacts	Key	Termination	Colour	Additional
PX0108S02GY	2	-	Crimp	Grey	SBA
PX0108S03GY	3	-	Crimp	Grey	SBA
PX0108S04GY	4	-	Crimp	Grey	SBA

Standard Rectangular Connectors
Male - TER



PX0110

- 3 Contacts
- Male housing
- Terminating resistor
- Socket contacts
- Available in Grey
- Additional options available



Part Number	Contacts	Key	Termination	Colour	Additional
PX0110S03GY	3	-	Crimp	Grey	TER

RECTANGULAR Standard Rectangular Connectors

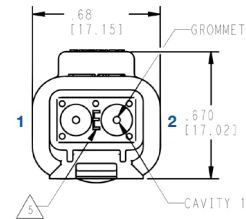


Standard Rectangular Connectors
Female



PX0101

- 2, 3, 4, 6, 8 & 12 Contacts
- Female Housing
- Plug contacts
- Available in Grey and Black
- Additional options available



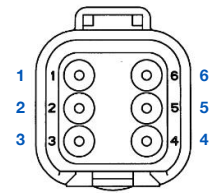
Part Number	Contacts	Key	Termination	Colour	Additional
PX0101P02BK	2	-	Crimp	Black	-
PX0101P02GY	2	-	Crimp	Grey	-
PX0101P03BK	3	-	Crimp	Black	-
PX0101P03GY	3	-	Crimp	Grey	-
PX0101P04BK	4	-	Crimp	Black	-
PX0101P04GY	4	-	Crimp	Grey	-
PX0101P06BK	6	-	Crimp	Black	-
PX0101P06GY	6	-	Crimp	Grey	-
PX0101P08ABK	8	A	Crimp	Black	-
PX0101P08AGY	8	A	Crimp	Grey	-
PX0101P12ABK	12	A	Crimp	Black	-
PX0101P12AGY	12	A	Crimp	Grey	-

Standard Rectangular Connectors
Female - PEC



PX0106

- 2, 3, 4, 6, 8 & 12 Contacts
- Female Housing
- Protective end cap
- Plug contacts
- Available in Grey and Black
- Additional options available



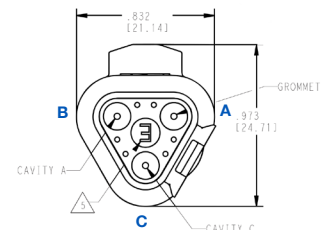
Part Number	Contacts	Key	Termination	Colour	Additional
PX0106P02BK	2	-	Crimp	Black	PEC
PX0106P02GY	2	-	Crimp	Grey	PEC
PX0106P03BK	3	-	Crimp	Black	PEC
PX0106P03GY	3	-	Crimp	Grey	PEC
PX0106P04BK	4	-	Crimp	Black	PEC
PX0106P04GY	4	-	Crimp	Grey	PEC
PX0106P06BK	6	-	Crimp	Black	PEC
PX0106P06GY	6	-	Crimp	Grey	PEC
PX0106P08ABK	8	A	Crimp	Black	PEC
PX0106P08AGY	8	A	Crimp	Grey	PEC
PX0106P12ABK	12	A	Crimp	Black	PEC
PX0106P12AGY	12	A	Crimp	Grey	PEC

Standard Rectangular Connectors
Female - PEC & SBA



PX0107

- 3 Contacts
- Female Housing
- Protective end cap & shrink boot adapter
- Plug contacts
- Available in Grey
- Additional options available



Part Number	Contacts	Key	Termination	Colour	Additional
PX0107P03GY	3	-	Crimp	Grey	PEC & SBA

RECTANGULAR Standard Rectangular Connectors

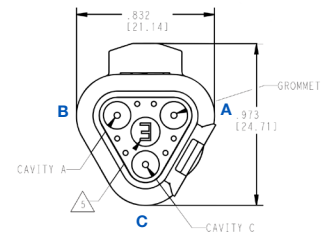


Standard Rectangular Connectors
Female - SBA



PX0109

- 2, 3 & 4 Contacts
- Female Housing
- Shrink boot adapter
- Plug contacts
- Available in Grey and Black
- Additional options available



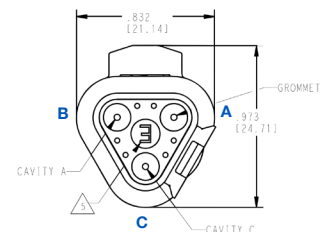
Part Number	Contacts	Key	Termination	Colour	Additional
PX0109P02BK	2	-	Crimp	Black	SBA
PX0109P02GY	2	-	Crimp	Grey	SBA
PX0109P03BK	3	-	Crimp	Black	SBA
PX0109P04GY	4	-	Crimp	Grey	SBA

Standard Rectangular Connectors
Female - TER



PX0111

- 3 Contacts
- Female Housing
- Terminating resistor
- Plug contacts
- Available in Grey
- Additional options available



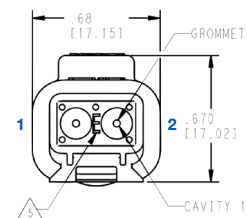
Part Number	Contacts	Key	Termination	Colour	Additional
PX0111P03GY	3	-	Crimp	Grey	TER

Standard Rectangular Connectors
Female - WFL



PX0112

- 2, 3, 4, 8 & 12 Contacts
- Female Housing
- Welded flange
- Plug contacts
- Available in Grey
- Additional options available



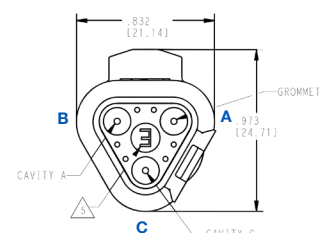
Part Number	Contacts	Key	Termination	Colour	Additional
PX0112P02GY	2	-	Crimp	Grey	WFL
PX0112P03GY	3	-	Crimp	Grey	WFL
PX0112P04GY	4	-	Crimp	Grey	WFL
PX0112P08AGY	8	A	Crimp	Grey	WFL
PX0112P12AGY	12	A	Crimp	Grey	WFL

Standard Rectangular Connectors
Female - YTY



PX0113

- 3 Contacts
- Female Housing
- Y-type connector
- Plug contacts
- Available in Grey
- Additional options available



Part Number	Contacts	Key	Termination	Colour	Additional
PX0113P03GY	3	-	Crimp	Grey	YTY

Contacts

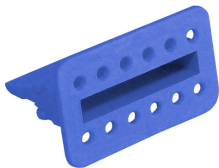


SA1000

- Crimp Plug & Sockets
- Choice of Gold and Nickel Plated
- Green Stripe available

Part Number	Plating	AWG	Type	Plug / Socket	Additional
SA1000/G	Nickel Plating	14	Solid	Plug	Green Stripe
SA1001/G	Nickel Plating	14	Solid	Socket	Green Stripe
SA1002/G	Nickel Plating	16 - 20	Solid	Plug	Green Stripe
SA1003/G	Nickel Plating	16 - 20	Solid	Socket	Green Stripe
SA1000	Nickel Plating	14	Solid	Plug	-
SA1001	Nickel Plating	14	Solid	Socket	-
SA1002	Nickel Plating	16 - 20	Solid	Plug	-
SA1003	Nickel Plating	16 - 20	Solid	Socket	-
SA1004	Nickel Plating	16 - 20	Stamped	Plug	Bandolier
SA1005	Nickel Plating	16 - 20	Stamped	Socket	Bandolier
SA1006	Nickel Plating	14 - 18	Stamped	Plug	Bandolier
SA1007	Nickel Plating	14 - 18	Stamped	Socket	Bandolier
SA1008	Gold Plating	14 - 18	Stamped	Plug	Bandolier
SA1009	Gold Plating	14 - 18	Stamped	Socket	Bandolier

Wedgelocks



WLP12

- Plug & Sockets available
- 2, 3, 4, 6, 8 & 12 Contact

* Wedgelocks are sold separately and are required for confirmation of alignment of contact. Please refer to the chart above to determine part required: e.g. WLP02 is required for 2 Contact female housings

Part Number	Contacts	Plug / Socket	Additional
WLP02	02	Plug	-
WLS02	02	Socket	-
WLS02ENS	02	Socket	Enhanced Seal
WLP03	03	Plug	-
WLS03	03	Socket	-
WLP04	04	Plug	-
WLS04	04	Socket	-
WLP06	06	Plug	-
WLS06	06	Socket	-
WLP08	08	Plug	-
WLS08	08	Socket	-
WLP12	12	Plug	-
WLS12	12	Socket	-

Tooling



- Crimp tooling available
- Probe extraction tool

Part Number	Additional
10000	Crimping tool for heavy duty Rectangular Connectors (series coming soon)
10001	Probe extraction tool
10002	Crimping tool for Rectangular Connectors

Electrical:

No Contacts: 2, 3, 4, 6, 8 & 12
 Current Rating: 13A
 Voltage Rating: 250V DC
 Insulation Resistance: >1000MΩ (@ 500V DC)
 Dielectric Strength: <2mA @ 15V AC
 Operating Temperature Range: -25°C to +120°C

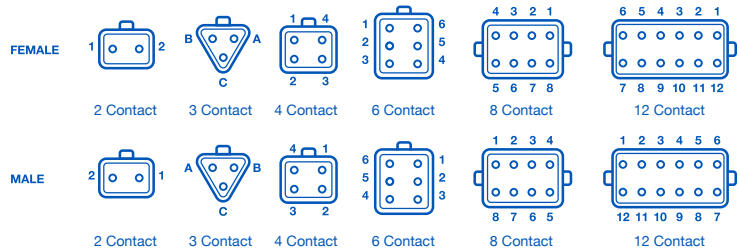
Material

Body Mouldings: Polybutylene Terephthalate, Polyamide
 Glass Fiber
 Contacts: Copper Alloy Nickel Plated, Copper Alloy
 Gold Plated
 Rubber Seal: Silicone Rubber
 RoHS Compliant

Mechanical:

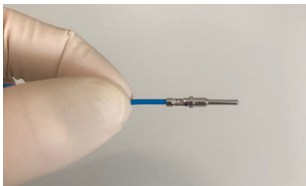
Sealing: IP68 (with Rear Protection)
 Contact Accommodation: 14 - 20 AWG 2.5-0.35 mm²
 Termination: Crimp terminals
 Contact Retention: Size 16: 111N (25 lbs)
 Cycles: 100

Contact Layout (Rear View)



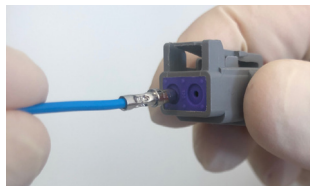
Contact Insertion Instructions

Step One:



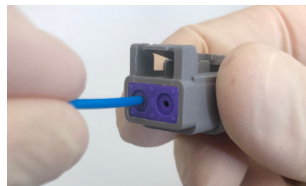
Use a previously crimped contact and wire and hold just behind the contact barrel.

Step Two:



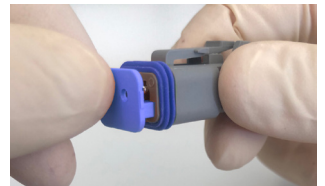
Line the contact up with the grommet.

Step Three:



Push the contact until a click is felt. Check the contact is in place by gently tugging and confirming alignment. Repeat for number of contacts desired

Step Four:



When contacts are in place, insert the appropriate wedgelock until a click is heard. Once male and female housings are prepared the parts can be mated

PX0	XXX	X	XX	X	XX
Range	Body Type	Contact Type	Contacts	Key	Colour
PX0	100 = Male 101 = Female 102 = Male Enhanced Seal Retention 103 = Male Enhanced Seal Retention & Protective End Cap 104 = Male Enhanced Seal Retention & Shrink Boot Adapter 105 = Male Protective End Cap 106 = Female Protective End Cap 107 = Female Protective End Cap & Shrink Boot Adapter 108 = Male Shrink Boot Adapter 109 = Female Shrink Boot Adapter 110 = Male Terminating Resistor 111 = Terminating Resistor 112 = Female Welded Flange 113 = Female Y Type	S = Socket P = Plug	02 03 04 06 08 12	A = A Key	GY = Grey BK = Black