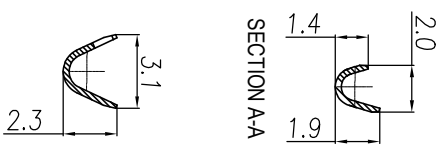
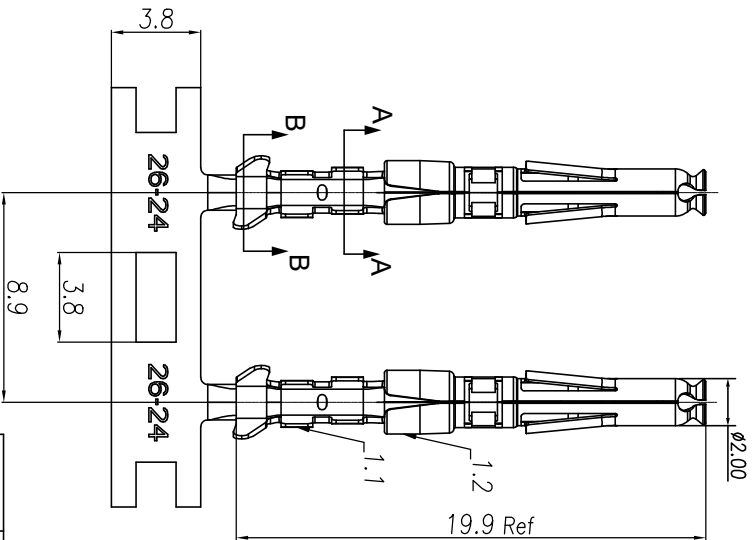
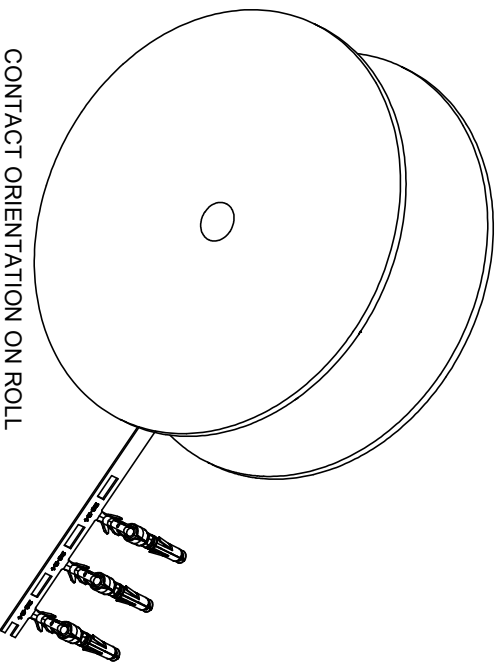
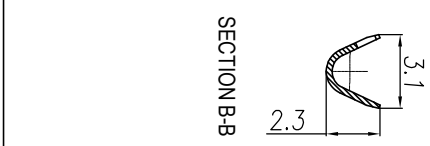


| REVISIONS | | | | |
|-----------|-----|------------------------|-----------|--------------|
| REV | ECO | DESCRIPTION | DATE | BY APPR |
| A1 | - | RELEASED DRAWING | Nov-9-17 | Rookie Tommy |
| A2 | - | ADD THE GS PART NUMBER | Jan-28-19 | Blink Tommy |
| A3 | - | CHANGE HAND CRIMPER | Nov-8-19 | Flan Tommy |



SECTION A-A



SECTION B-B

CONTACT ORIENTATION ON ROLL
 NOTES: (UNLESS OTHERWISE SPECIFIED)

- MATERIAL:
 - CONTACT BODY: COPPER ALLOY.
 - OUTER SPRING: STAINLESS STEEL.
- SPECIFICATIONS:
 - CURRENT RATING: 5A MAX.
 - TERMINATION TYPE: CRIMPING.
 - WIRE RANGE: 26~24AWG.
 - WIRE INSULATION DIA(MAX): Ø2.2mm.
- ROHS COMPLIANT.
- ALL DIMENSIONS ARE FOR REFERENCE USE ONLY.
- AVAILABLE TOOLS:
 - HAND CRIMPER: MFX-3958. A3
 - CRIMP APPLICATOR: MFX-3957.
 - EXTRACTION TOOL: QXRT20.

| P/N | CONTACT PLATING(MATING AREA) |
|-----------|---------------------------------|
| SS24W2T | TIN PLATING OVER NICKEL. |
| SS24W2N | NICKEL PLATING OVER COPPERIZE. |
| SS24W2F | GOLD FLASH PLATING OVER NICKEL. |
| SS24W2G5 | 5µ" GOLD PLATING OVER NICKEL. |
| SS24W2G10 | 10µ" GOLD PLATING OVER NICKEL. |
| SS24W2G15 | 15µ" GOLD PLATING OVER NICKEL. |
| SS24W2G30 | 30µ" GOLD PLATING OVER NICKEL. |

A2

| QUANTITY | PART NUMBER | DESCRIPTION | ITEM |
|---|-------------|--------------------------|----------|
| | | MATERIALS LIST | |
| <p>UNLESS OTHERWISE SPECIFIED 1) All dimensions are in millimeters. 2) Tolerances are as follows: 1 Pt. DEC 40-30 Fractions 1/164 3 Pt. DEC 20-08 Angles 30° 3) Note reference = A</p> | | | |
| SIGNATURES | | DATE | |
| DRAWN: Ril | Nov-8-19 | CHECKED: Mih | Nov-8-19 |
| ENGINEER: Tommy | Nov-8-19 | APPROVE: Tommy | Nov-8-19 |
| CUSTOMER: | | MATERIAL SPECIFICATIONS: | |
| ECO-MATE SOCKET CONTACT, STAMPED, 24-26AWG, SIZE 20 | | PROCESS SPECIFICATIONS: | |
| SCALE: NONE | | NEXT ASBY: | |

Amphenol

Sine Systems - www.amphenol-sine.com
 44724 Montey Drive
 Clinton Township, MI 48038

ECO-MATE SOCKET CONTACT,
 STAMPED, 24-26AWG, SIZE 20

SS24W2XX

REVISION **A3**