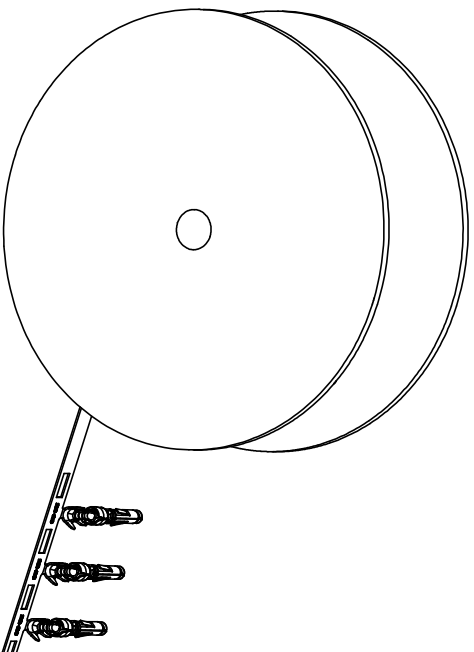


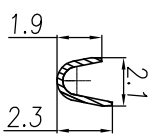
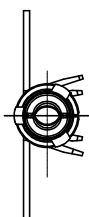
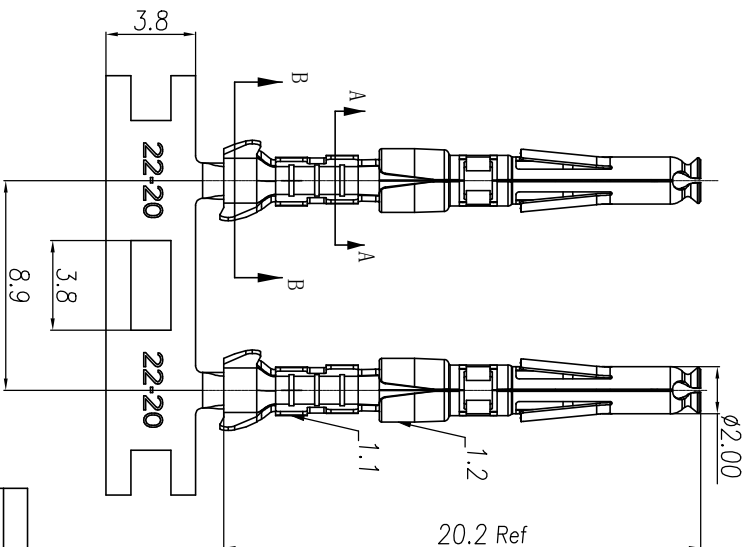
| REVISIONS |     |                        |           |              |
|-----------|-----|------------------------|-----------|--------------|
| REV       | ECO | DESCRIPTION            | DATE      | BY APPR      |
| A1        | -   | RELEASED DRAWING       | Nov-9-17  | Rookie Tommy |
| A2        | -   | ADD THE GS PART NUMBER | Jan-28-19 | Blink Tommy  |
| A3        | -   | CHANGE HAND CRIMPER    | Nov-8-19  | Flan Tommy   |



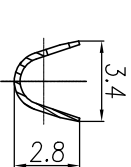
CONTACT ORIENTATION ON ROLL

NOTES: (UNLESS OTHERWISE SPECIFIED)

- MATERIAL:
  - CONTACT BODY: COPPER ALLOY.
  - OUTER SPRING: STAINLESS STEEL.
- SPECIFICATIONS:
  - CURRENT RATING: 5A MAX.
  - TERMINATION TYPE: CRIMPING.
  - WIRE RANGE: 22~20AWG.
  - WIRE INSULATION DIA(MAX):  $\varnothing 2.6\text{mm}$ .
- RHS COMPLIANT.
- ALL DIMENSIONS ARE FOR REFERENCE USE ONLY.
- AVAILABLE TOOLS:
  - HAND CRIMPER: MFX-3958. <sup>(A3)</sup>
  - CRIMP APPLICATOR: MFX-3957.
  - EXTRACTION TOOL: QXRT20.



SECTION A-A



SECTION B-B

| QUANTITY | PART NUMBER | DESCRIPTION | ITER |
|----------|-------------|-------------|------|
|          |             |             |      |

**MATERIALS LIST**

| UNLESS OTHERWISE SPECIFIED  | SIGNATURES  | DATE               |          |                      |          |           |  |                       |          |  |
|---|---|--------------------|----------|----------------------|----------|-----------|--|-----------------------|----------|--|
| 1) All dimensions are in millimeters.<br>2) Tolerances are as follows:<br>1 Pt. DEC 0.030<br>2 Pt. DEC 0.025<br>3 Pt. DEC 0.015 | <table border="1"> <tr> <td>DRAWN: <b>Flan</b></td> <td>Nov-8-19</td> </tr> <tr> <td>CHECKED: <b>Flan</b></td> <td>Nov-8-19</td> </tr> <tr> <td>ENGINEER:</td> <td></td> </tr> <tr> <td>APPROVE: <b>Tommy</b></td> <td>Nov-8-19</td> </tr> </table> | DRAWN: <b>Flan</b> | Nov-8-19 | CHECKED: <b>Flan</b> | Nov-8-19 | ENGINEER: |  | APPROVE: <b>Tommy</b> | Nov-8-19 |  |
| DRAWN: <b>Flan</b>  | Nov-8-19  |                    |          |                      |          |           |  |                       |          |  |
| CHECKED: <b>Flan</b>  | Nov-8-19  |                    |          |                      |          |           |  |                       |          |  |
| ENGINEER:   |   |                    |          |                      |          |           |  |                       |          |  |
| APPROVE: <b>Tommy</b>   | Nov-8-19  |                    |          |                      |          |           |  |                       |          |  |
| 3) Note reference =   |   |                    |          |                      |          |           |  |                       |          |  |

|                         |           |   |
|-------------------------|-----------|---|
| MATERIAL SPECIFICATIONS | CUSTOMER: | ECO-MATE SOCKET CONTACT, STAMPED, 20-22AWG, SIZE 20 |
| PROCESS SPECIFICATIONS  |           |   |
| NEXT ASBY:              |           |   |

|       |      |          |          |
|-------|------|----------|----------|
| SIZE  | TYPE | DWG NO.  | REVISION |
| B     | C-   | SS20W2XX | A3       |
| SCALE | NONE | SHEET    | 1 OF 1   |

| P/N       | CONTACT PLATING(MATING AREA)         |
|-----------|--------------------------------------|
| SS20W2T   | TIN PLATING OVER NICKEL.             |
| SS20W2N   | NICKEL PLATING OVER COPPERIZE.       |
| SS20W2F   | GOLD FLASH PLATING OVER NICKEL.      |
| SS20W2G5  | 5 $\mu$ " GOLD PLATING OVER NICKEL.  |
| SS20W2G10 | 10 $\mu$ " GOLD PLATING OVER NICKEL. |
| SS20W2G15 | 15 $\mu$ " GOLD PLATING OVER NICKEL. |
| SS20W2G30 | 30 $\mu$ " GOLD PLATING OVER NICKEL. |

(A2)

**Amphenol**  
Sine Systems - www.amphenol-sine.com  
44724 Monty Drive  
Clinton Township, MI 48038