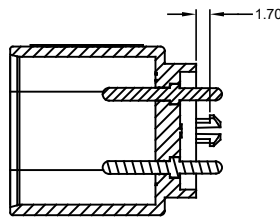
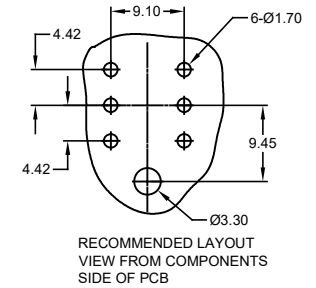
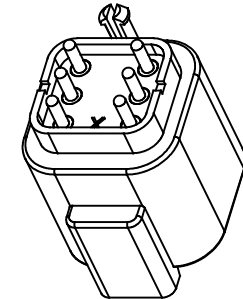
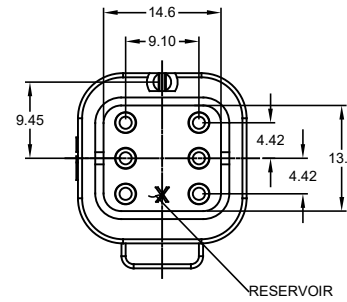
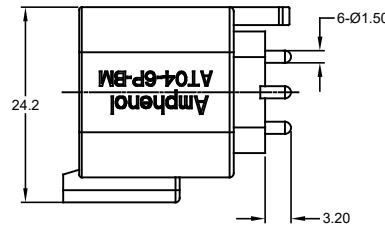
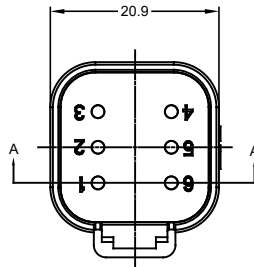
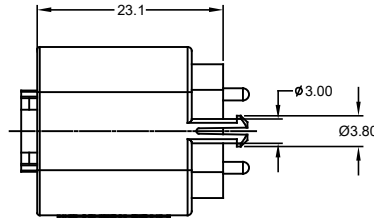


REVISIONS					
REV	ECO	DESCRIPTION	DATE	BY	APPR
A1	-	RELEASE NEW DWG FORMAT	SEP/24/14	ORION	
A2	-	UPDATE DRAWING	OCT/06/14	JARRY	
A3	-	UPDATE DRAWING	OCT/21/14	JARRY	
A4	-	ADD NICKEL PLATING VERSION	APR/24/15	ORION	
A5	-	CHANGE PC TAIL LENGTH	AUG/04/15	ORION	TOMMY
A6	-	REMOVE A DIMENSION AND ADD COLOR	AUG/10/15	ORION	TOMMY
A7	-	REVISE DRAWING	10JUL20	JHEAD	DH



SECTION A-A

AT04-2P-BMXX VARIANTS		
CONTACT PLATING	POTTING OR NOT IN RESERVOIR	PART NUMBER
GOLD	NO POTTING	AT04-6P-BM01
GOLD	POTTING	AT04-6P-BM02
NICKEL	NO POTTING	AT04-6P-BM03
NICKEL	POTTING	AT04-6P-BM04

NOTES: UNLESS OTHERWISE SPECIFIED

- MATERIAL:
HOUSING: THERMOPLASTIC; COLOR: BLACK
CONTACT: COPPER ALLOY
- MODIFICATIONS: PCB MOUNT
- SPECIFICATIONS:
3.1 CURRENT RATING: 13 AMPS
3.2 OPERATING TEMPERATURE: -55°C TO +125°C
3.3 DIELECTRIC WITHSTANDING VOLTAGE: LESS THAN 2 MILLIAMPS CURRENT LEAKAGE @ 1500 VOLTS AC.
3.4 INSULATION RESISTANCE: 1000 MEGOHMS MIN @ 25°C.
3.5 MOISTURE RESISTANCE: IP67 (MATED CONDITION)
3.6 MATING CYCLE DURABILITY: 100 CYCLES
3.7 RoHS COMPLIANT
- MATING PART: AT06-6S* PLUG (* = MODIFICATIONS AND COLORS)
- ALL DIMENSIONS ARE FOR REFERENCE USE ONLY.
- POTTED CONNECTORS SPECIFIED FOR UP TO 5 P.S.I. APPLICATIONS.

TITLE: PCB MOUNT RECEPTACLE 6 PINS STRAIGHT A SERIES
DWG NO.: AT04-6P-BMXX
REV: A7
SHEET: 1 OF 1

SEE PART NUMBER CHART		PART NUMBER		DESCRIPTION		ITEM
QUANTITY						
MATERIALS LIST						
UNLESS OTHERWISE SPECIFIED 1) All dimensions are in metric (mm). 2) Tolerances are as follows: 1 PL DEC ±0.30 Fractions ±1/64 2 PL DEC ±0.15 3 PL DEC ±0.08 3) Note reference =			SIGNATURES		DATE	
			DRAWN: ORION LI		SEP/24/14	
			CHECKED:			
			ENGINEER:			
			APPROVAL: TOMMY XIE		SEP/24/14	
MATERIAL SPECIFICATIONS:			CUSTOMER:			
PROCESS SPECIFICATIONS:			THIS DRAWING IS SUPPLIED FOR INFORMATION ONLY. DESIGN FEATURES, SPECIFICATIONS AND PERFORMANCE DATA SHOWN HEREON ARE THE PROPERTY OF THE AMPHENOL CORPORATION. NO RIGHTS OF REPRODUCTION ARE IMPLIED. ALL DIMENSIONS ARE SUBJECT TO NORMAL MANUFACTURING VARIATIONS.			
NEXT ASSY:			SCALE: NONE		SHEET 1 OF 1	
Amphenol				Sine Systems - www.amphenol-sine.com 44724 Marley Drive Clinton Township, MI 48036		
BOARDLOCK PCB MOUNT RECEPTACLE, 6 PIN, STRAIGHT, A SERIES				SIZE: B C- TYPE: AT04-6P-BMXX DWG NO.: A7 REVISION:		