

INTRODUCTIONS

1. Designed as a general purpose filter with a fuse holder providing effective EMI suppression for both common and differential mode noise.
2. All part numbers are UL recognized, CSA certified and VDE approved.

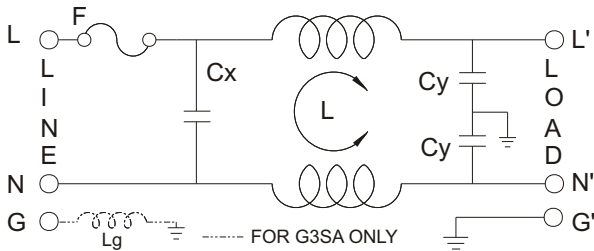
COMPONENTS

PART NO.	Cx (uF)	L (mH)	Cy (pF)	Lg (mH)
02BEEG3H	0.1	2.4	3300	-
04BEEG3H		2.8		
04BEEG3S	0.015	0.7	2200	0.4
04BEEG3SA	0.1			
06BEEG3H				

MINIMUM INSERTION LOSS IN dB

COMMON MODE (L-G) IN 50 OHM SYSTEM						
CURRENT RATING	FREQUENCY-MHz					
	.15	.50	1.0	5.0	10	30
2A	25	35	40	55	55	55
4A	26	30	40	50	55	45
4A(S)	26	30	40	50	55	45
6A	20	30	35	50	55	45
DIFFERENTIAL MODE (L-L) IN 50 OHM SYSTEM						
2A	6	15	25	40	45	45
4A	6	15	25	40	45	45
4A(S)	1	5	12	30	40	40
6A	6	15	20	40	45	45

ELECTRICAL SCHEMATIC



MECHANICAL CONSTRUCTION



EG3H, EG3S

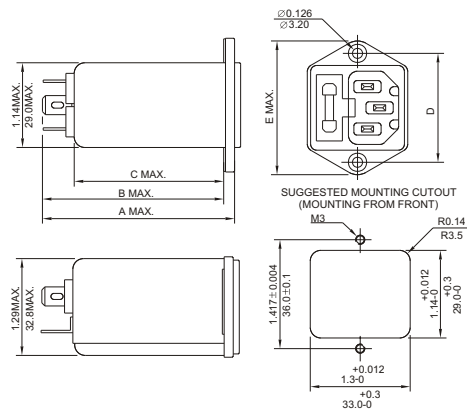
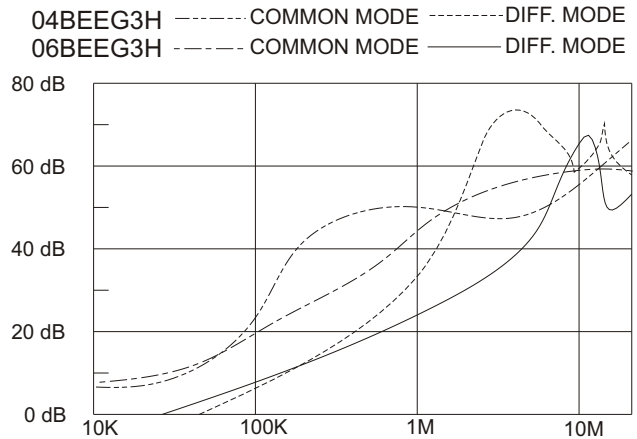
SPECIFICATIONS

1. Maximum leakage current each line-to-ground @ 115VAC 60Hz: 0.25mA @ 250VAC 50Hz: 0.45mA
2. Hipot rating (one minute) line-to-ground: 2250VDC line-to-line: 1450VDC
3. Operating frequency: 50/60Hz
4. Rated voltage: 115/250VAC

SERIES DIMENSIONS

DELTA PART NO.	STYLE	DIMENSIONS IN INCHES/mm				
		A	B	C	D	E
02BEEG3H	EG3H	2.56 65.0	2.42 61.5	2.00 50.8	1.417 35.99	1.75 44.5
04BEEG3H	EG3H					
06BEEG3H	EG3H					
04BEEG3S/A	EG3S	2.25 57.2	2.1 53.3	1.65 41.91		

INSERTION LOSS (TYPICAL)



UNIT: INCH
mm

INTRODUCTIONS

1. Designed as a general purpose filter with a fuse holder providing effective EMI suppression for both common and differential mode noise.
2. All part numbers are UL recognized, CSA certified and VDE approved.
3. Bleeder resistor is added with suffix "-R".
4. With optional Y CAP. from 100pF ~ 4700pF.

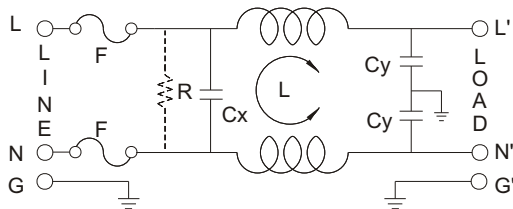
COMPONENTS

PART NO.	Cx (uF)	L (mH)	Cy (pF)	R(Ω)
02BEEG3F/-R	0.1	4.0	3300	1M
04BEEG3F/-R		1.8		
06BEEG3F/-R		0.8		

MINIMUM INSERTION LOSS IN dB

COMMON MODE (L-G) IN 50 OHM SYSTEM						
CURRENT RATING	FREQUENCY-MHz					
	.15	.50	1.0	5.0	10	30
2A	29	38	40	42	43	41
4A	19	30	32	42	42	39
6A	13	22	26	38	42	38
DIFFERENTIAL MODE (L-L) IN 50 OHM SYSTEM						
2A	5	19	28	48	51	50
4A	5	14	21	48	48	42
6A	5	12	15	40	46	38

ELECTRICAL SCHEMATIC



MECHANICAL CONSTRUCTION



BEEG3F

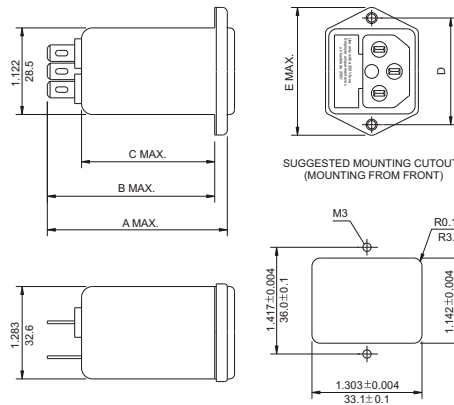
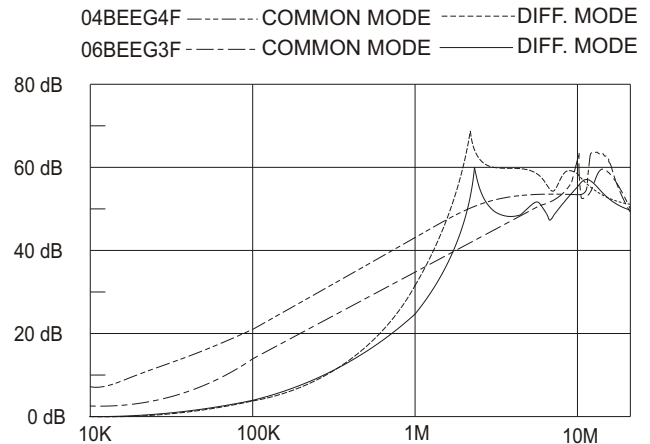
SPECIFICATIONS

1. Maximum leakage current each line-to-ground @ 115VAC 60Hz: 0.25mA @ 250VAC 50Hz: 0.45mA
2. Hipot rating (one minute) line-to-ground: 2250VDC line-to-line: 1450VDC
3. Operating frequency: 50/60Hz
4. Rated voltage: 115/250VAC

SERIES DIMENSIONS

DELTA PART NO.	STYLE	DIMENSIONS IN INCHES/mm				
		A	B	C	D	E
02BEEG3F	EG3F	2.263	2.106	1.66	1.42	1.74
04BEEG3F	EG3F	57.5	53.5	42.0	36.0	44.0
06BEEG3F	EG3F					

INSERTION LOSS (TYPICAL)



UNIT: INCH
mm

INTRODUCTIONS

1. Designed as a general purpose filter with a switch effective EMI suppression for both common and differential mode noise.
2. With optional resistor and 3300pF/1000pF
3. Bleeder resistor is added with suffix "-R".
4. Switch electrical lifetime : 10,000 cycles.
Maximum inrush current : 50A.

COMPONENTS

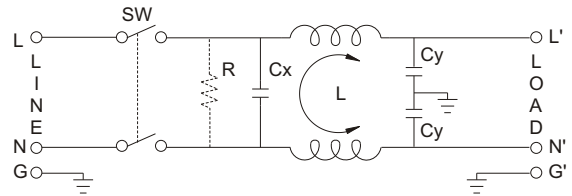
PART NO.	Cx (uF)	L (mH)	Cy (pF)	R (Ω)	Lg (mH)
03BEEG3G/NG3G/-R	0.1	2.4	2200	1M	0.12
03BEEG3GA/NG3GA/-R					
06BEEG3G/NG3G/-R		0.8			
06BEEG3GA/NG3GA/-R					
10BEEG3G/NG3G/-R		0.3			
10BEEG3GA/NG3GA/-R					

A: with ground choke

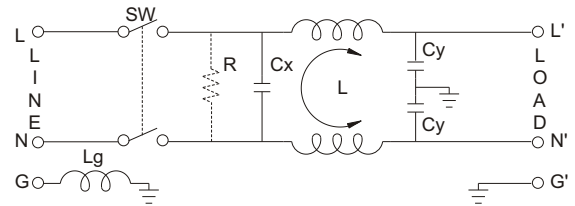
SPECIFICATIONS

1. Maximum leakage current each
line-to-ground @ 115VAC 60Hz: 0.25mA
@ 250VAC 50Hz: 0.45mA
2. Hipot rating (one minute)
line-to-ground: 2250VDC
line-to-line: 1450VDC
3. Operating frequency: 50/60Hz
4. Rated voltage: 115/250VAC

ELECTRICAL SCHEMATIC



R: OPTION



3GA ONLY

MINIMUM INSERTION LOSS IN dB

COMMON MODE (L-G) IN 50 OHM SYSTEM						
CURRENT RATING	FREQUENCY-MHz					
	.15	.50	1.0	5.0	10	30
3A (G) (A)	20	30	35	35	35	35
6A (G) (A)	10	20	25	35	40	35
10A (G) (A)	5	10	20	30	35	35
DIFFERENTIAL MODE (L-L) IN 50 OHM SYSTEM						
3A (G) (A)	4	10	20	35	35	40
6A (G) (A)	4	10	10	35	35	40
10A (G) (A)	5	10	20	30	35	35

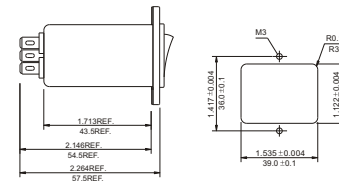
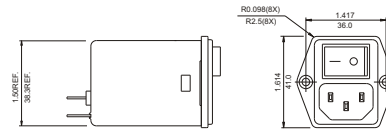
MECHANICAL CONSTRUCTION



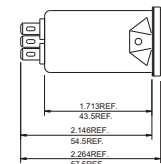
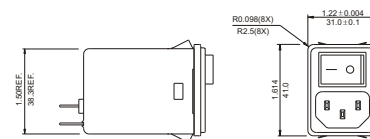
BENG3G



BEEG3G



BEEG3G



BENG3G

SUGGESTED MOUNTING CUTOUT (MOUNTING FROM FRONT)





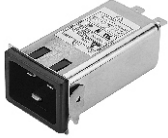
SUGGESTED MOUNTING CUTOUT (MOUNTING FROM FRONT)

Suggested thickness of mounting panel is from 0.04(1.0) to 0.63(1.6) inch(mm) of mounting cutout





UNIT: INCH
mm

Medical Filter




DE & GE Series IEC INLET FILTERS

PRODUCT TYPE	EG3BM/EG3QM	NG3QM	NG3QM(H)	20GEEG3EM	20GENG3EM
PICTURE					
CURRENT RATING	1/3/6/10A	3/6/10A	3/6/10A	20A	20A



KE / KEN Series HIGH PERFORMANCE IEC INLET / SNAP-IN FILTERS

PRODUCT TYPE	G3EAM/G3SAM	W3EAM/W3SAM	G3EAM/G3SAM	W3EAM/W3SAM
PICTURE				
CURRENT RATING	3/8(6)/10A	3/8(6)/10A	3/8(6)/10A	3/8(6)/10A




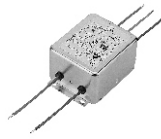

BE Series SWITCH / DUAL-FUSE IEC INLET FILTERS

PRODUCT TYPE	BENG3GM	BEEG3GM	BEEG3FM
PICTURE			
CURRENT RATING	3/6/10A	3/6/10A	2/4/6A

NB Series POWER ENTRY MODULE FILTERS



PRODUCT TYPE	NB3M	NB4M
PICTURE		
CURRENT RATING	3/4/6A	3/4/6A

DC Series 2-STAGE HIGH PERFORMANCE FILTERS



PRODUCT TYPE	CG5BM	CW5BM	GG5BM	GW5BM	GS5BM
PICTURE					
CURRENT RATING	3/6/12A	3/6/12A	16A	16A	16A







Medical Filter

EK Series POWER ENTRY MODULE FILTERS

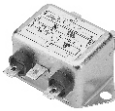




PRODUCT TYPE	EK3M/AM/SM/SAM	EK4M/AM/SM/SAM
PICTURE		
CURRENT RATING	3/6/10A	3/6/10A

DP Series 2-STAGE PERFORMANCE FILTERS

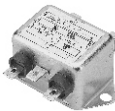




PRODUCT TYPE	CG5CM	CS5CM
PICTURE		
CURRENT RATING	3/6/12/16/20A	16/20A

GS5CM	CG5BM	CW5CM, CW5BM	GG5BM	GW5BM	GS5BM
					
30A	3/6/12A	3/6/12A	16A	16A	16A


DK Series GENERAL PURPOSE FILTERS

PRODUCT TYPE	BG5BM	CG5BM	CW5BM	CS5BM	BW5BM
PICTURE					
CURRENT RATING	3/6/12A	16/20A	16A	20/30A	3/6/12A

DB Series GENERAL PURPOSE FILTERS

PRODUCT TYPE	BG5BM	BW5BM	CG5BM	CW5BM	CS5BM
PICTURE					
CURRENT RATING	12A	12A	16A	16A	20/30A

MK Series HIGH PERFORMANCE PC BOARD MOUNTING FILTERS

PRODUCT TYPE	MK4EM
PICTURE	
CURRENT RATING	1/3/6/10A

Remark: Please refer safety approval of Medical Filter to individual series.