

# ***bq20z45EVM-001 SBS 1.1 Impedance Track™ Technology Enabled Battery Management Solution EVM***

---



---



---

The bq20z45EVM-001 evaluation module (EVM) is a complete evaluation system for the bq20z45/bq29412 battery management system. The EVM includes one bq20z45/bq29412 circuit module, a current sense resistor, two thermistors, and a link to Windows™-based PC software. The circuit module includes one bq20z45 integrated circuit (IC), one bq29412 IC, and all other onboard components necessary to monitor and predict capacity, perform cell balancing, monitor critical parameters, protect the cells from overcharge, overdischarge, short circuit, and overcurrent in 2-, 3- or 4-series cell Li-ion or Li-polymer battery packs. The circuit module connects directly across the cells in a battery. With the EV2300 interface board and software, the user can read the bq20z45 data registers, program the chipset for different pack configurations, log cycling data for further evaluation, and evaluate the overall functionality of the bq20z45/bq29412 solution under different charge and discharge conditions

### **Contents**

1	Features .....	2
2	bq20z45-Based Circuit Module .....	2
3	bq20z45 Circuit Module Schematic .....	3
4	Circuit Module Physical Layouts and Bill of Materials .....	3
5	EVM Hardware and Software Setup .....	9
6	Troubleshooting Unexpected Dialog Boxes .....	9
7	Hardware Connection .....	9
8	Operation .....	10
9	Calibration Screen .....	13
10	Pro (Advanced) Screen .....	14
11	Related Documentation from Texas Instruments .....	15

### **List of Figures**

1	Layout (Silk Screen) .....	4
2	Top Assembly .....	4
3	Top Layer .....	4
4	Bottom Layer .....	5
5	Bottom Assembly .....	5
6	Schematic .....	8
7	bq20z45 Circuit Module Connection to Cells and System Load/Charger .....	10
8	SBS Data Screen .....	11
9	Data Flash Screen, 1st Level Safety Class .....	12
10	Calibration Screen .....	14
11	Pro (Advanced) Screen .....	15

### **List of Tables**

1	Ordering Information .....	2
2	Bill of Materials .....	6
3	Performance Specification Summary .....	9

Impedance Track is a trademark of Texas Instruments.  
Windows is a trademark of Microsoft Corporation.

---

4	Circuit Module to EV2300 Connections .....	10
---	--	----

## 1 Features

- Complete evaluation system for the bq20z45 SBS 1.1-compliant advanced gas gauge with Impedance Track™ technology and bq29412 independent overvoltage protection IC
- Populated circuit module for quick setup
- Link to software that allows data logging for system analysis

### 1.1 Kit Contents

- bq20z45/bq29412 circuit module
- Set of support documentation

### 1.2 Ordering Information

**Table 1. Ordering Information**

EVM PART NUMBER	CHEMISTRY	CONFIGURATION	CAPACITY
bq20z45EVM-001	Li-ion	2, 3, or 4 cell	Any

## 2 bq20z45-Based Circuit Module

The bq20z45/bq29412-based circuit module is a complete and compact example solution of a bq20z45 circuit for battery management and protection of Li-ion or Li-polymer packs. The circuit module incorporates a bq20z45 battery monitor IC, bq29412 independent overvoltage protection IC, and all other components necessary to accurately predict the capacity of 2-, 3-, or 4-series cells.

### 2.1 Circuit Module Connections

Contacts on the circuit module provide the following connections:

- Direct connection to the cells: 1N (BAT–), 1P, 2P, 3P, 4P (BAT+)
- To the serial communications port (SMBC, SMBD, VSS)
- The system load and charger connect across PACK+ and PACK–
- To the system present pin (SYS PRES)

## 2.2 Pin Descriptions

PIN NAME	DESCRIPTION
1N	–ve connection of first (bottom) cell
1P	+ve connection of first (bottom) cell
2P	+ve connection of second cell
3P	+ve connection of third cell
4P	+ve connection of fourth (top) cell
SMBC	Serial communication port clock
SMBD	Serial communication data port
VSS	Pack negative terminal
PACK–	Pack negative terminal
SYS PRES	System present pin (if low, system is present)
PACK+	Pack positive terminal

## 3 bq20z45 Circuit Module Schematic

This section contains information on the schematic for the bq20z45/bq29412 implementation.

### 3.1 Schematic

The schematic follows the bill of materials in this user's guide.

### 3.2 Choosing Particular Precharge Mode

The chipset supports both a charger that has a precharge mode and one that does not. The EVM supports a charger that does not have a precharge mode by grounding the PMS pin with R28. R17 and Q3 are used as the precharge current path in order to sustain sufficient Pack+ voltage when the battery voltage is too low to power up the bq20z45 IC.

If the charger has a precharge function, R17 and FET Q3 are not used. The EVM does not have a provision to pull the PMS pin high to disable the ZVCHG output. The charge FET Q2 is used as the precharge FET, and the charger must control the precharge current and voltage.

Note: The configuration at the PMS pin is a hardware-level control. Once the bq20z45 is up and running, the firmware may change the precharge settings. See the bq20z45 data sheet ([SLUS800](#)) for further information.

### 3.3 Testing Fuse-Blowing Circuit

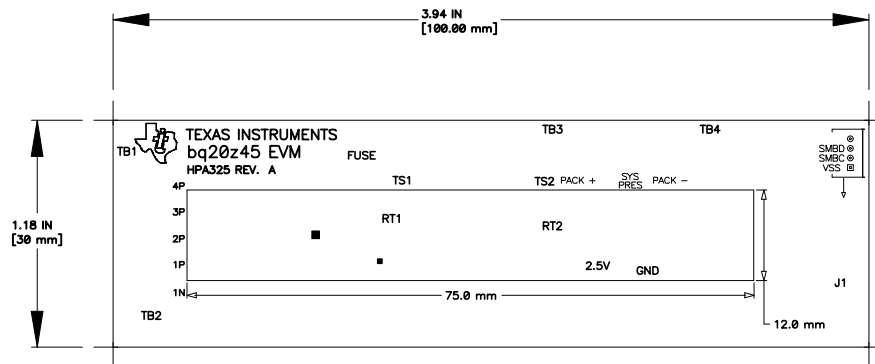
To prevent the loss of board functionality during the fuse-blowing test, the actual chemical fuse is not provided in the circuit. FET Q1 drives TP3 low if a fuse-blow condition occurs; therefore, monitoring TP3 can be used to test this condition.

## 4 Circuit Module Physical Layouts and Bill of Materials

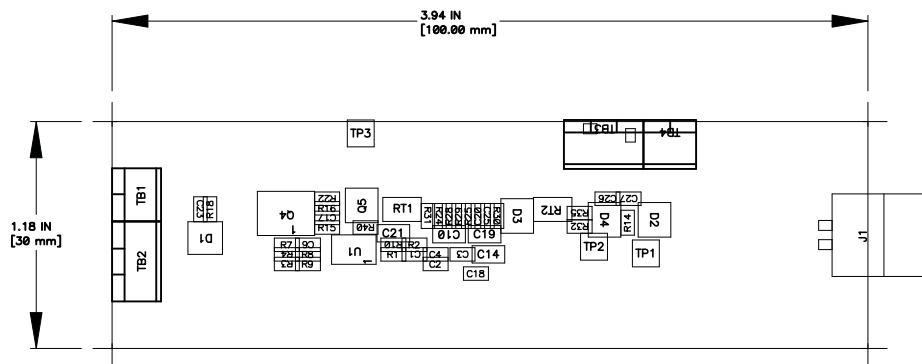
This section contains the board layout, bill of materials, and assembly drawings for the bq20z45/bq29412 circuit module.

### 4.1 Board Layout

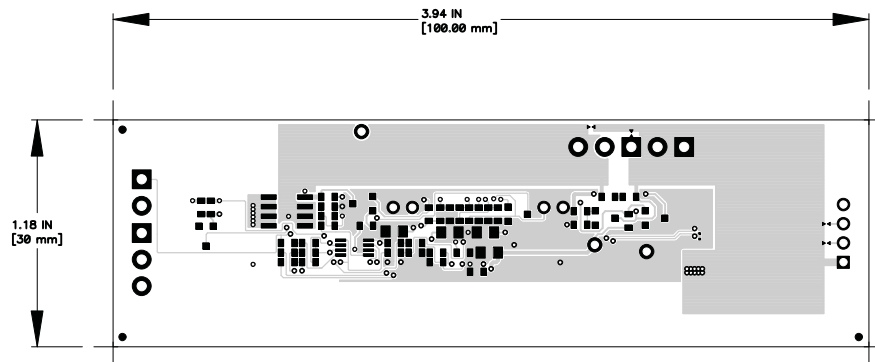
This section shows the dimensions, PCB layers, and assembly drawing for the bq20z45 module.



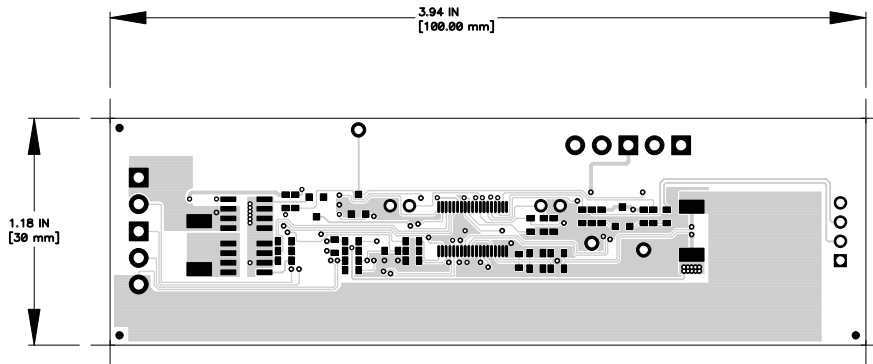
**Figure 1. Layout (Silk Screen)**



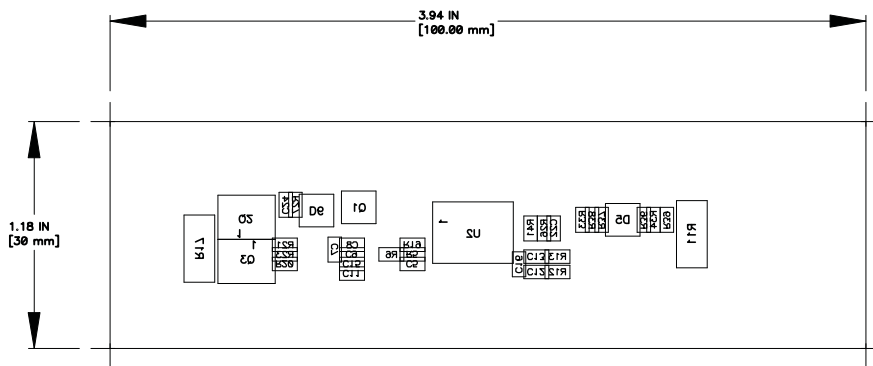
**Figure 2. Top Assembly**



**Figure 3. Top Layer**



**Figure 4. Bottom Layer**



**Figure 5. Bottom Assembly**

## 4.2 Bill of Materials

**Table 2. Bill of Materials**

Count	RefDes	Value	Description	Size	Part Number	Mfr
20	C1, C2, C3, C4, C5, C6, C7, C8, C9, C12, C13, C15, C16, C17, C18, C20, C23, C24, C26, C27	0.1µF	Capacitor, Ceramic, 50V, X7R, 20%	0603	STD	Any
3	C10, C14, C21	1.0µF	Capacitor, Ceramic, 25V, X7R, 20%	0805	STD	Any
1	C11	0.22µF	Capacitor, Ceramic, 50V, X7R, 20%	0603	STD	Any
1	C19	2.2µF	Capacitor, Ceramic, 10V, X7R, 20%	0805	STD	Any
2	C22, C25	0.47µF	Capacitor, Ceramic, 16V, X7R, 20%	0603	STD	Any
4	D1, D2, D3, D6	BAS16	Diode, Switching, 150mA, 75V, 350mW	SOT23	BAS16	Vishay-Liteon
2	D4, D5	AZ23C5V6	Diode, Dual, Zener, 5.6V, 300mW	SOT23	AZ23C5V6	Vishay-Telefunken
1	J1	22-05-3041	Header, Friction Lock Ass'y, 4-pin Right Angle	0.400 × 0.500 inch	22-05-3041	Molex
1	Q1	NDS331N	MOSFET, N-Ch, 20V, 1.3A, 21mΩ	SOT23	NDS331N	Fairchild
2	Q2, Q4	FDS8817NZ	MOSFET, N-Ch, 30V, 15A, 7mΩ	SO8	FDS8817NZ	Fairchild
1	Q3	FDS4435BZ	MOSFET, P-Ch, -30V, -8.8A, 20mΩ	SO8	FDS4435BZ	Fairchild
1	Q5	2N7002DICT	MOSFET, N-Ch, 60V, 115mA, 1.2Ω	SOT23	2N7002DICT	Vishay-Liteon
12	R1, R2, R3, R4, R5, R12, R13, R32, R33, R34, R38, R39	100	Resistor, Chip, 1/16W, 5%	0603	STD	Any
1	R11	0.010 75ppm	Resistor, Chip, 1W, 1%	2512	WSL-2512-010 1% R86	Vishay
4	R14, R19, R21, R22	5.1K	Resistor, Chip, 1/16W, 5%	0603	STD	Any
2	R15, R16	220K	Resistor, Chip, 1/16W, 5%	0603	STD	Any
1	R17	300	Resistor, Chip, 1W, 5%	2512	STD	Any
2	R18, R27	3.01M	Resistor, Chip, 1/16W, 1%	0603	STD	Any
4	R20, R36, R37, R40	1M	Resistor, Chip, 1/16W, 5%	0603	STD	Any
0	R23, R24		Resistor, Chip, 1/16W, 5%	0603	STD	Any
2	R25, R29	8.45K	Resistor, Chip, 1/16W, 1%	0603	STD	Any
2	R26, R30	61.9K	Resistor, Chip, 1/16W, 1%	0603	STD	Any
2	R28, R41	100K	Resistor, Chip, 1/16W, 5%	0603	STD	Any
7	R6, R7, R8, R9, R10, R31, R35	1K	Resistor, Chip, 1/16W, 5%	0603	STD	Any
2	RT1, RT2	10K	Thermistor, NTC, 3-A	0.095 × 0.150 inch	103AT-2	Semitec
2	TB1, TB4	ED555/2DS	Terminal Block, 2-pin, 6-A, 3.5mm	0.27 × 0.25 inch	ED555/2DS	OST
2	TB2, TB3	ED555/3DS	Terminal Block, 3-pin, 6-A, 3.5mm	0.41 × 0.25 inch	ED555/3DS	OST
1	TP1	GND	Test Point, Black, Thru Hole Color Keyed	0.100 × 0.100 inch	5001	Keystone
1	TP2	2.5V	Test Point, Red, Thru Hole Color Keyed	0.100 × 0.100 inch	5000	Keystone
1	TP3	FUSE	Test Point, White, Thru Hole Color Keyed	0.100 × 0.100 inch	5002	Keystone
1	U1	BQ29412DCT	IC, Voltage Protection for 2, 3, 4 Cell Lion, 2nd Protection, 4.45 v OVP	SSOP-08	BQ29412DCT	TI
1	U2	BQ20z45DBT	IC, SBS 1.1-Compliant Gas Gauge and Protection Enabled With Impedance Track	TSSOP-38 (DBT)	BQ20z45DBT	TI
<b>Connector</b>						
2	J5 mate	Connector, Female, 0.100 Centers			22-01-3047	Molex
8	N/A	Terminals, Crimp, Tin			08-50-0114	Molex
	N/A	Wire, Insulated 24 Awg, Red, 18 inches (±3 inches) (USB_5V)			1854-3	Alpha

**Table 2. Bill of Materials (continued)**

Count	RefDes	Value	Description	Size	Part Number	Mfr
	N/A		Wire, Insulated 24 Awg, White, 18 inches (±3 inches) (SCL)		1854-1	Alpha
	N/A		Wire, Insulated 24 Awg, Black, 18 inches (±3 inches) (GND)		1854-2	Alpha
	N/A		Wire, Insulated 24 Awg, Brown, 18 inches (±3 inches) (SDA)		1854-7	Alpha
1	N/A		Heatshrink 1"		Any	Any
<p>Notes 1. These assemblies are ESD sensitive, ESD precautions shall be observed.</p> <p>2. These assemblies must be clean and free from flux and all contaminants. Use of no clean flux is not acceptable.</p> <p>3. These assemblies must comply with workmanship standards IPC-A-610 Class 2.</p> <p>4. Ref designators marked with an asterisk (***) cannot be substituted. All other components can be substituted with equivalent MFG's components.</p> <p>5. Make one SMBus connector wire assembly for each assembly produced, from J5 male, 4–24 Awg wires and Red – Pin #4 — (Signal USB_5V) Brown – Pin #3 — (Signal SDA) White – Pin #2 — (Signal SCL) Black – Pin #1 — (GND)</p> <p>6. RT1 and RT2 should be assembled horizontally laying flat against the board Edge.</p>						





### 4.3 bq20z45/bq29412 Circuit Module Performance Specification Summary

This section summarizes the performance specifications of the bq20z45/bq29412 circuit module.

**Table 3. Performance Specification Summary**

Specification	Min	Typ	Max	Unit
Input voltage Pack+ to Pack–	6	15	25	V
Charge and discharge current	0	2	7	A

## 5 EVM Hardware and Software Setup

This section describes how to install the bq20z45EVM-001 PC software, and how to connect the different components of the EVM.

### 5.1 System Requirements

The bq20z45 evaluation software requires Windows 2000 or Windows XP.

### 5.2 Software Installation

Obtain the latest software version in the bq20z45 tool folder on [power.ti.com](http://power.ti.com). Use the following steps to install the bq20z45EVSW software:

1. Save the archive to a temporary directory. Open the archive containing the installation package, and copy its contents to a temporary directory. The executable filename can consist of several component names and versions. Double-click on the executable filename, and follow the installer instructions to complete the bq20z45 EVSW installation.
2. If the EV2300 was not previously installed, after bq20z45 EVSW installation, a TI USB DRIVER INSTALLER pops up. Click "Yes" for the agreement message, and follow its instructions. Two drivers are associated with the EV2300. Follow the instruction to install both. Do not reboot the computer even if asked to do so.
3. Plug the EV2300 into a USB port.

## 6 Troubleshooting Unexpected Dialog Boxes

Ensure that the files were extracted from the zip file using the *Preserve Folder names* option.

Ensure that all the files were extracted from the zip file.

The user that is downloading the files must be logged in as the administrator.

The driver is not signed, so the administrator must allow installation of unsigned drivers in the operating system policy.

## 7 Hardware Connection

The bq20z45EVM-001 comprises two hardware components: the bq20z45/bq29412 circuit module and the EV2300 PC interface board.

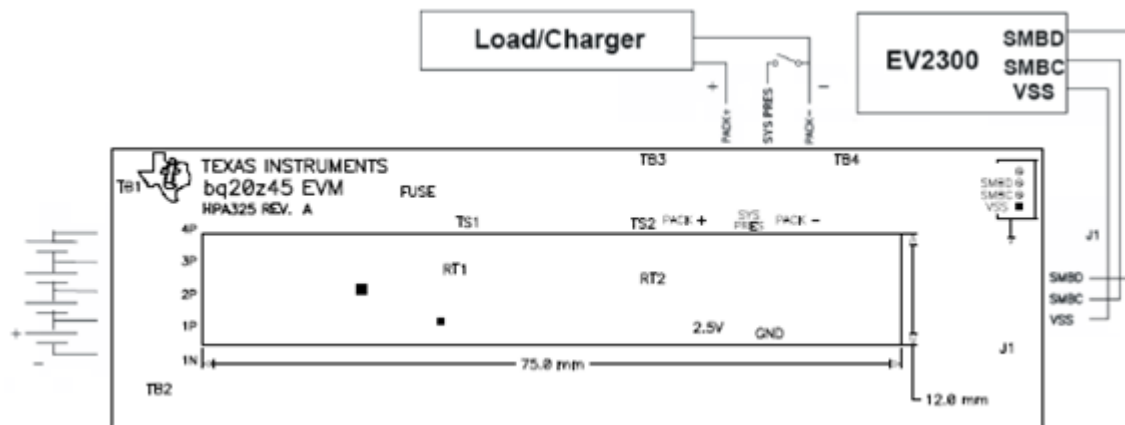
### 7.1 Connecting the bq20z45/bq29412 Circuit Module to a Battery Pack

[Figure 7](#) shows how to connect the bq20z45/bq29412 circuit module to the cells and system load/charger.

The cells must be connected in the following order:

1. 4-Cell Pack: 1N (BAT–), 1P, 2P, 3P, and 4P (see [Section 2.1](#) for definitions).
2. 3-Cell Pack: 1N (BAT–), 1P, 2P, and then connect 4P and 3P together.
3. 2-Cell Pack: 1N (BAT–), 1P, and then connect 4P, 3P, and 2P together

To start charge or discharge test, connect SYS PRES pin to PACK- pin to set SYS PRES state. To test sleep mode, disconnect the SYS PRES pin.



**Figure 7. bq20z45 Circuit Module Connection to Cells and System Load/Charger**

## 7.2 PC Interface Connection

The following steps configure the hardware for interface to the PC:

1. Connect the bq20z45-based smart battery to the EV2300 using wire leads as shown in [Table 4](#).

**Table 4. Circuit Module to EV2300 Connections**

bq20z45-Based Battery	EV2300
SMBD	SMBD
SMBC	SMBC
VSS	GND

2. Connect the PC USB cable to the EV2300 and the PC USB port.

The bq20z45EVM-001 is now set up for operation.

## 8 Operation

This section details the operation of the bq20z45 EVSW software. Note: the EV2300 driver does not support Windows Sleep or Hibernate. In case of a problem communicating with the EV2300 or the EVM, first unplug the USB cable then plug it back in. If the problem persists, check whether the EVM is in Shutdown mode. The bq20z45 can be awakened by momentarily applying a voltage higher than 5.5 V (but less than 25 V) at Pack+ pin of the EVM.

### 8.1 Starting the Program

With the EV2300 and the bq20z45 EVM connected to the computer, run bq20z45 EVSW from the Start | All Programs | Texas Instruments | bq Evaluation Software menu sequence. The SBS Data screen appears. Data begins to appear once the <Refresh> (single time scan) button is clicked, or when the <Keep Scanning> check box is checked. To disable the scan feature, deselect <Keep Scanning>.

The continuous scanning period can be set via the |Options| and |Set Scan Interval| menu selections. The range for this interval is 0 ms to 65535 ms. Only items that are selected for scanning are scanned within this period.

The bq20z45 EVSW provides a logging function which logs the values that were last scanned by EVSW. To enable this function, select the *Start Logging* button; this causes the *Keep Scanning* button to be selected. When logging is *Stopped*, the keep scanning button is still selected and has to be manually unchecked.

The logging intervals are specified under the |Options| menu with the maximum value of 65535 milliseconds. The *Log* interval cannot be smaller than the scan interval because this results in the same value being logged at least twice.

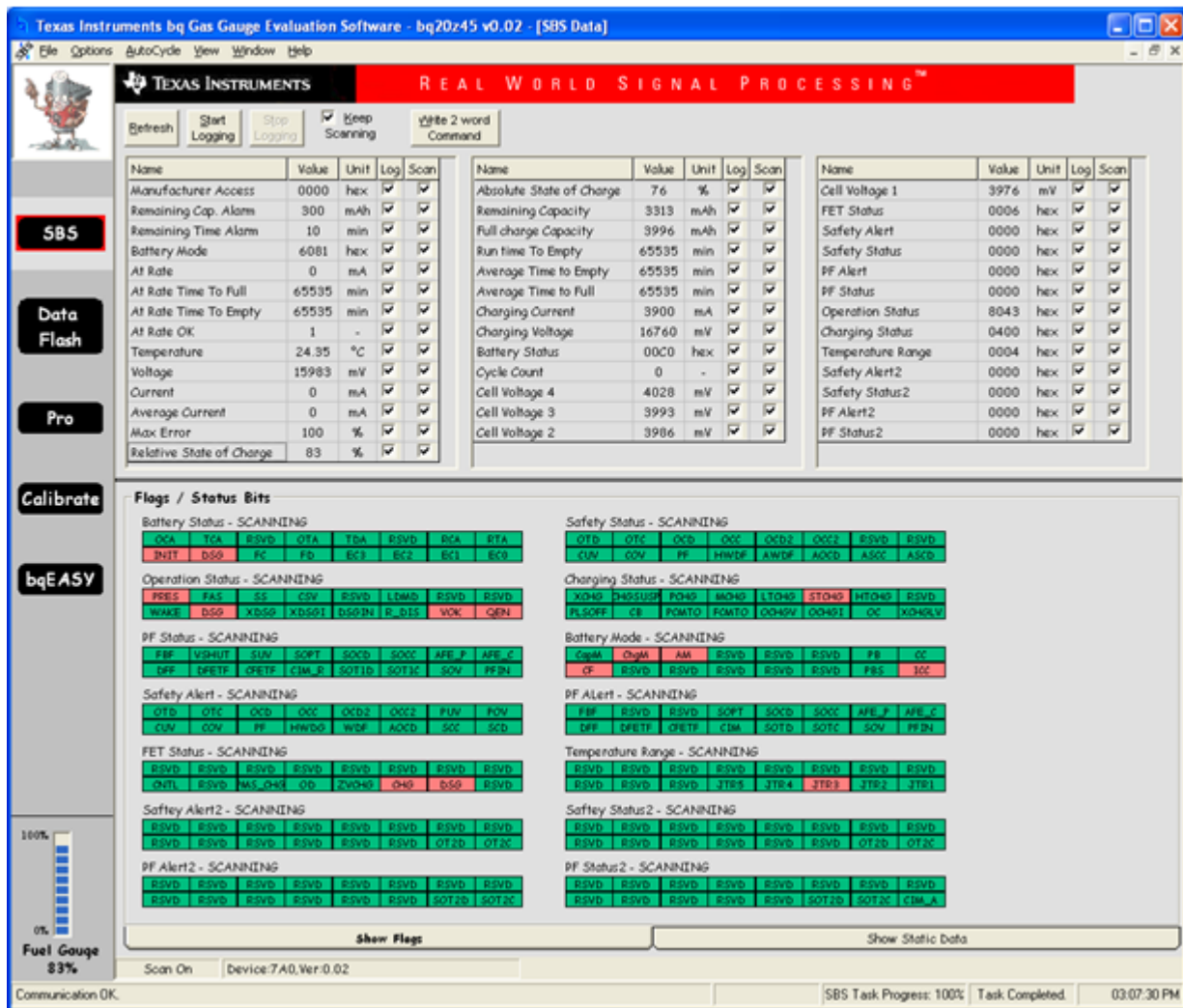


Figure 8. SBS Data Screen

This screen shows the SBS data set along with additional ManufacturerAccess() command information such as individual cell measurements. Additional Flag and Static data can be viewed by selecting the appropriate tab at the bottom of the SBS screen.

Data such as SBS.ManufacturerName() is static and does not change. This data is viewed separately using the *Static Data* tab available at the bottom of the screen.

Dragging the splitter bar (line that separates the Flags/Static data from SBS values) changes the height of the Flags/Static Data display. Selecting [View] then [Auto Arrange] returns the splitter bar to its original location.

## 8.2 Setting Programmable bq20z45 Options

The bq20z45 data flash comes configured per the default settings detailed in the bq20z45 data sheet (SLUS800) and bq20z45 Technical Reference literature (SLUU313). Ensure that the settings are correctly changed to match the pack and application for the bq20z45 solution being evaluated.

**IMPORTANT:** The correct setting of these options is essential to get the best performance.

The settings can be configured using the Data Flash screen.

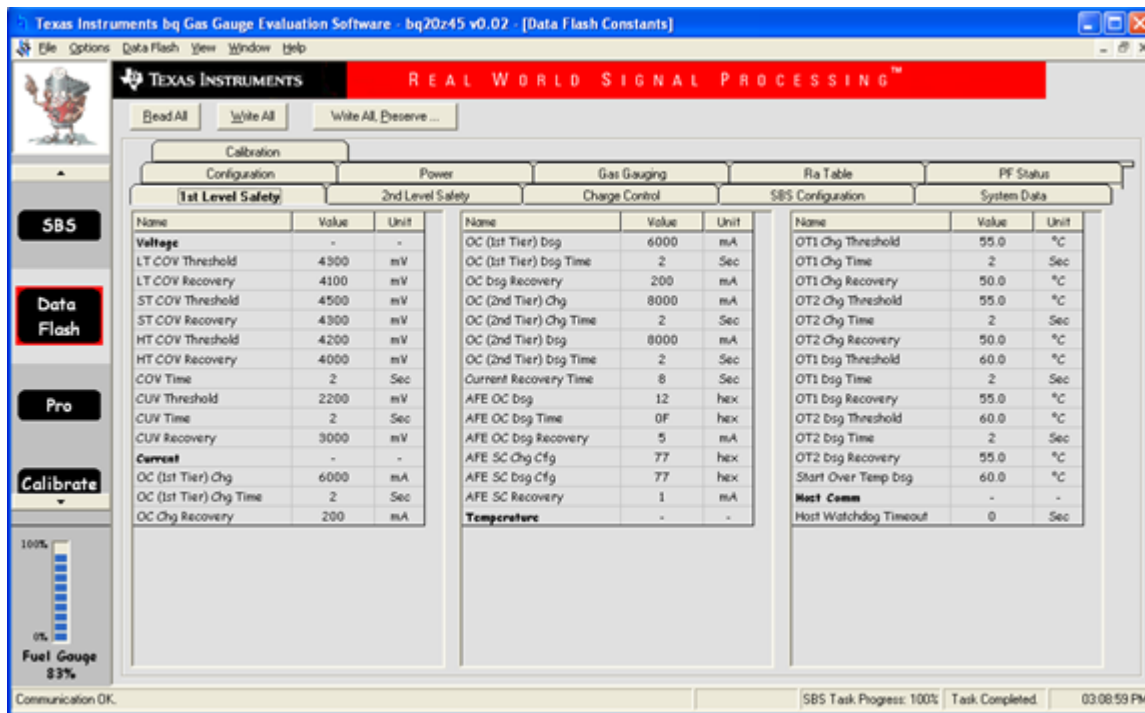


Figure 9. Data Flash Screen, 1st Level Safety Class

To read all the data from the bq20z45 data flash, click on menu option | Data Flash | Read All |.

To write to a data flash location, click on the desired location, enter the data, and press <Enter>, which writes the entire tab of flash data, or select menu option |Data Flash|Write All|. The data flash must be read before any writes are performed to avoid any incorrect data being written to the device.

The | File | Special Export | menu options allows the data flash to be exported, but it configures the exported data flash to a learned state ready for mass production use.

The data flash configuration can be saved to a file by selecting | File | Export |, and entering a file name. A data flash file can also be retrieved in this way, imported, and written to the bq20z45 using the | Write All | button.

The configuration information and module calibration data are held in the bq20z45 data flash.

The bq20z45 allows for an automatic data flash export function, similar to the SBS Data logging function. This feature, when selected via | Options | Auto Export |, exports Data Flash to a sequential series of files named as *FilenameNNNNN.gg* where N = a decimal number from 0 to 9.

The AutoExport interval is set under the | Options menu | with a minimum value of 15 seconds. The AutoExport filename is also set under the | Options menu |.

When a check is next to | AutoExport |, the AutoExport is in progress. The same menu selection is used to turn on/off AutoExport.

If the data flash screen is blank, then the bq20z45 that is being used may not be supported by the bqEVSW version that is being used. An upgrade may be required.

## 9 Calibration Screen

### 9.1 How to Calibrate

The bq20z45 should be calibrated using power supplies or a power supply and cell simulation resistors (200 to 1000 ohm each) before cells are attached. Before the bq20z45 is calibrated:

- Connect and measure a 2-A current source from 1N (-) and Pack- (+) to calibrate without using the FETs (calibration using the FETs is not recommended).
- Measure the pack voltage from Batt+ to Batt- (total of cell voltages).
- Measure the temperature of the pack.
- These steps may or may not be required, depending on the type of calibration being performed.

### 9.2 To Calibrate the bq20z45

Select the types of calibration to be performed.

Enter the measured values for the types selected (except for *CC Offset Calibration*).

If *Voltage Calibration* is selected, then enter the number of cells in the pack.

If *Temperature Calibration* is selected, then select the sensor that is to be calibrated.

If the current source is connected between 1N and Pack-, then select the *Off (bypassed)* check box in the *FET Control* section.

Press the *Calibrate Part* button.

### 9.3 Board Offset Calibration

This performs the offset calibration for the current offset of the board.

Remove any current source, load, or external voltage from the PACK terminals.

Press the *Software Board Offset Calibration* button.

### 9.4 Pack Voltage Calibration

This calibrates the voltage at the AFE Pack pin.

Ensure that *Voltage Calibration* has been performed for the pack. If *Voltage Calibration* is not performed, then *Pack Voltage Calibration* calibrates incorrectly.

Remove the load/external voltage applied between Pack+ and Pack-.

Press the *Pack Voltage* button to calibrate.

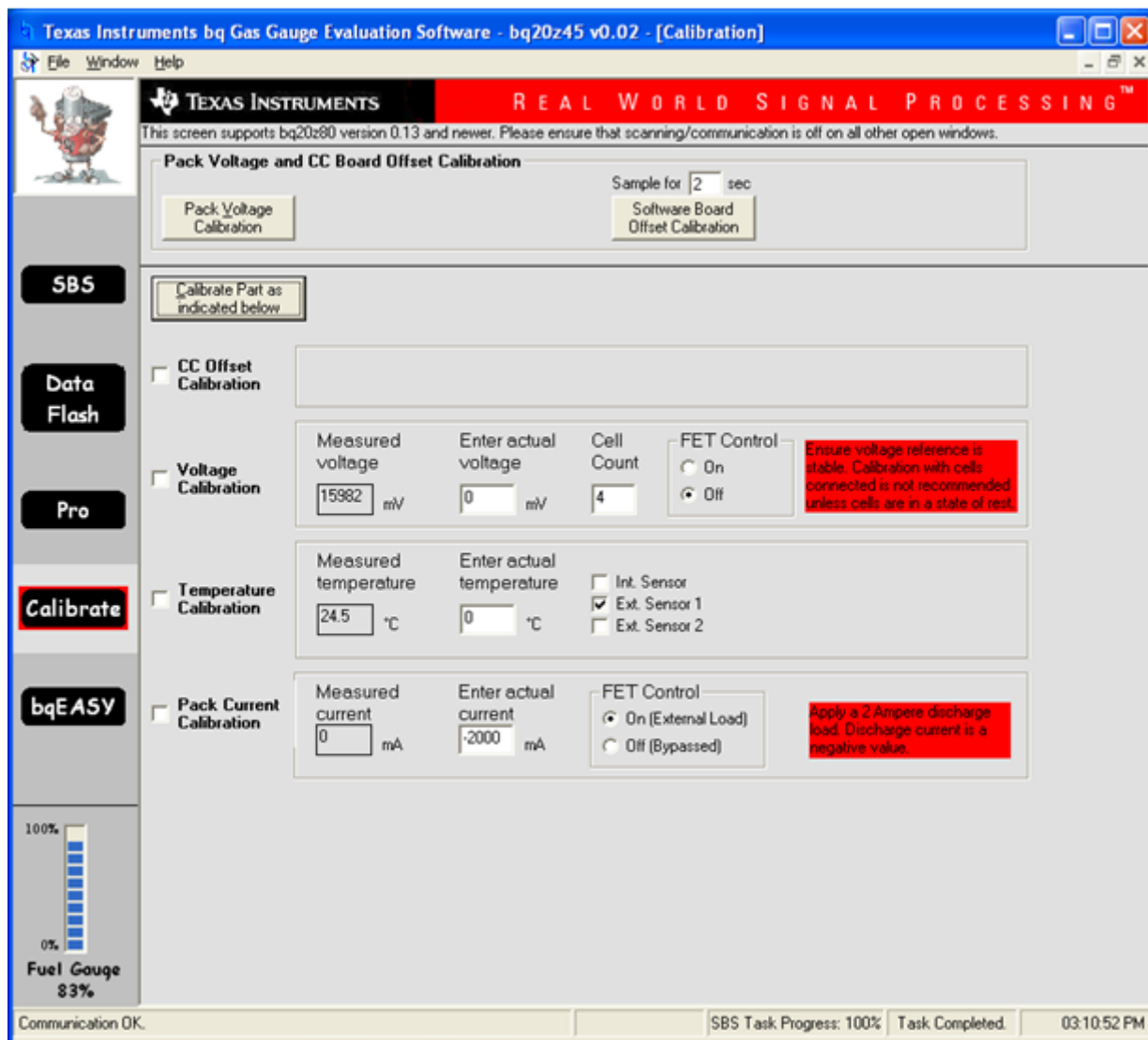


Figure 10. Calibration Screen

## 10 Pro (Advanced) Screen

### 10.1 SMB Communication

The set of read/write operations over SMBus are not specific to any gas gauge. These are provided as general-purpose communication tools.

### 10.2 Hex/Decimal Converter

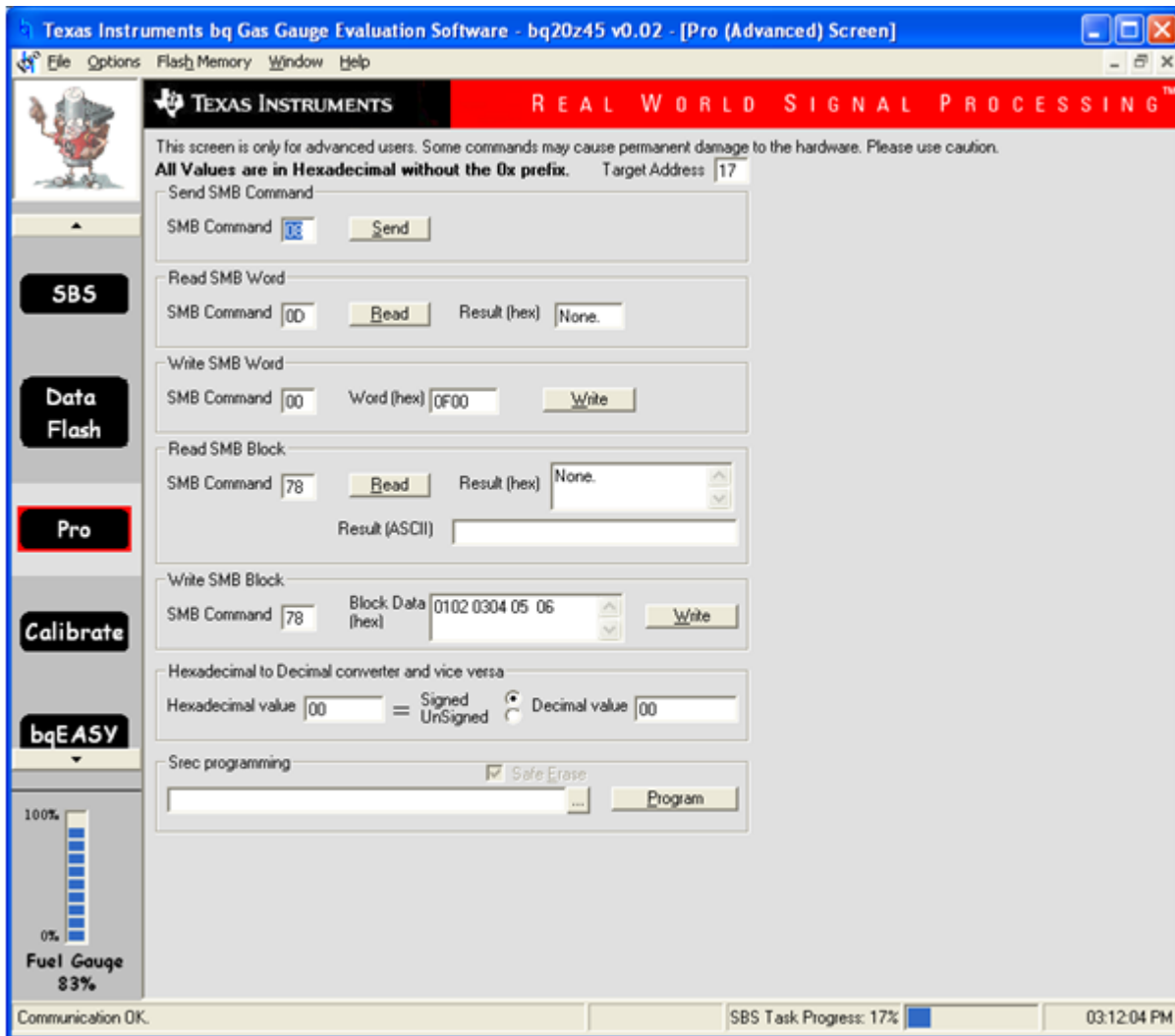
These two boxes convert between hexadecimal (hex) and decimal as soon as values are typed into the boxes. Invalid values may cause erroneous results.

When scaling converted hex values to a higher number of bytes, follow these rules:

- When unsigned is selected, the left pad contains zeroes.
- When signed is selected, the left pad contains zeroes for a positive number, or the left pad contains *F* for negative numbers.

### 10.3 Programming

The Pro Screen allows for reprogramming device firmware.



**Figure 11. Pro (Advanced) Screen**

## 11 Related Documentation from Texas Instruments

To obtain a copy of any of the following TI document, call the Texas Instruments Literature Response Center at (800) 477-8924 or the Product Information Center (PIC) at (972) 644-5580. When ordering, identify this document by its title and literature number. Updated documents can also be obtained through the TI Web site at [www.ti.com](http://www.ti.com)

**Documents:**

*bq20z45, SBS 1.1-Compliant Gas Gauge and Protection Enabled With Impedance Track™ data sheet*  
*bq20z45 Technical Reference*  
*bqEASY User's Guide*  
*Quick-Start Guide for bq20zxx Family Gas Gauges application report*  
*bq20z70 and bq20z90 Application Book*

**Literature Number:**

[SLUS800](#)  
[SLUU313](#)  
[SLUU278](#)  
[SLUA421](#)  
[SLUA404](#)





## EVALUATION BOARD/KIT IMPORTANT NOTICE

Texas Instruments (TI) provides the enclosed product(s) under the following conditions:

This evaluation board/kit is intended for use for **ENGINEERING DEVELOPMENT, DEMONSTRATION, OR EVALUATION PURPOSES ONLY** and is not considered by TI to be a finished end-product fit for general consumer use. Persons handling the product(s) must have electronics training and observe good engineering practice standards. As such, the goods being provided are not intended to be complete in terms of required design-, marketing-, and/or manufacturing-related protective considerations, including product safety and environmental measures typically found in end products that incorporate such semiconductor components or circuit boards. This evaluation board/kit does not fall within the scope of the European Union directives regarding electromagnetic compatibility, restricted substances (RoHS), recycling (WEEE), FCC, CE or UL, and therefore may not meet the technical requirements of these directives or other related directives.

Should this evaluation board/kit not meet the specifications indicated in the User's Guide, the board/kit may be returned within 30 days from the date of delivery for a full refund. **THE FOREGOING WARRANTY IS THE EXCLUSIVE WARRANTY MADE BY SELLER TO BUYER AND IS IN LIEU OF ALL OTHER WARRANTIES, EXPRESSED, IMPLIED, OR STATUTORY, INCLUDING ANY WARRANTY OF MERCHANTABILITY OR FITNESS FOR ANY PARTICULAR PURPOSE.**

The user assumes all responsibility and liability for proper and safe handling of the goods. Further, the user indemnifies TI from all claims arising from the handling or use of the goods. Due to the open construction of the product, it is the user's responsibility to take any and all appropriate precautions with regard to electrostatic discharge.

**EXCEPT TO THE EXTENT OF THE INDEMNITY SET FORTH ABOVE, NEITHER PARTY SHALL BE LIABLE TO THE OTHER FOR ANY INDIRECT, SPECIAL, INCIDENTAL, OR CONSEQUENTIAL DAMAGES.**

TI currently deals with a variety of customers for products, and therefore our arrangement with the user **is not exclusive.**

TI assumes **no liability for applications assistance, customer product design, software performance, or infringement of patents or services described herein.**

Please read the User's Guide and, specifically, the Warnings and Restrictions notice in the User's Guide prior to handling the product. This notice contains important safety information about temperatures and voltages. For additional information on TI's environmental and/or safety programs, please contact the TI application engineer or visit [www.ti.com/esh](http://www.ti.com/esh).

No license is granted under any patent right or other intellectual property right of TI covering or relating to any machine, process, or combination in which such TI products or services might be or are used.

### FCC Warning

This evaluation board/kit is intended for use for **ENGINEERING DEVELOPMENT, DEMONSTRATION, OR EVALUATION PURPOSES ONLY** and is not considered by TI to be a finished end-product fit for general consumer use. It generates, uses, and can radiate radio frequency energy and has not been tested for compliance with the limits of computing devices pursuant to part 15 of FCC rules, which are designed to provide reasonable protection against radio frequency interference. Operation of this equipment in other environments may cause interference with radio communications, in which case the user at his own expense will be required to take whatever measures may be required to correct this interference.

### EVM WARNINGS AND RESTRICTIONS

It is important to operate this EVM within the input voltage range of 6 V to 25 V and the output voltage range of 0 V to 16.4 V.

Exceeding the specified input range may cause unexpected operation and/or irreversible damage to the EVM. If there are questions concerning the input range, please contact a TI field representative prior to connecting the input power.

Applying loads outside of the specified output range may result in unintended operation and/or possible permanent damage to the EVM. Please consult the EVM User's Guide prior to connecting any load to the EVM output. If there is uncertainty as to the load specification, please contact a TI field representative.

During normal operation, some circuit components may have case temperatures greater than 60°C. The EVM is designed to operate properly with certain components above 60°C as long as the input and output ranges are maintained. These components include but are not limited to linear regulators, switching transistors, pass transistors, and current sense resistors. These types of devices can be identified using the EVM schematic located in the EVM User's Guide. When placing measurement probes near these devices during operation, please be aware that these devices may be very warm to the touch.

Mailing Address: Texas Instruments, Post Office Box 655303, Dallas, Texas 75265  
Copyright © 2009, Texas Instruments Incorporated

## IMPORTANT NOTICE

Texas Instruments Incorporated and its subsidiaries (TI) reserve the right to make corrections, modifications, enhancements, improvements, and other changes to its products and services at any time and to discontinue any product or service without notice. Customers should obtain the latest relevant information before placing orders and should verify that such information is current and complete. All products are sold subject to TI's terms and conditions of sale supplied at the time of order acknowledgment.

TI warrants performance of its hardware products to the specifications applicable at the time of sale in accordance with TI's standard warranty. Testing and other quality control techniques are used to the extent TI deems necessary to support this warranty. Except where mandated by government requirements, testing of all parameters of each product is not necessarily performed.

TI assumes no liability for applications assistance or customer product design. Customers are responsible for their products and applications using TI components. To minimize the risks associated with customer products and applications, customers should provide adequate design and operating safeguards.

TI does not warrant or represent that any license, either express or implied, is granted under any TI patent right, copyright, mask work right, or other TI intellectual property right relating to any combination, machine, or process in which TI products or services are used. Information published by TI regarding third-party products or services does not constitute a license from TI to use such products or services or a warranty or endorsement thereof. Use of such information may require a license from a third party under the patents or other intellectual property of the third party, or a license from TI under the patents or other intellectual property of TI.

Reproduction of TI information in TI data books or data sheets is permissible only if reproduction is without alteration and is accompanied by all associated warranties, conditions, limitations, and notices. Reproduction of this information with alteration is an unfair and deceptive business practice. TI is not responsible or liable for such altered documentation. Information of third parties may be subject to additional restrictions.

Resale of TI products or services with statements different from or beyond the parameters stated by TI for that product or service voids all express and any implied warranties for the associated TI product or service and is an unfair and deceptive business practice. TI is not responsible or liable for any such statements.

TI products are not authorized for use in safety-critical applications (such as life support) where a failure of the TI product would reasonably be expected to cause severe personal injury or death, unless officers of the parties have executed an agreement specifically governing such use. Buyers represent that they have all necessary expertise in the safety and regulatory ramifications of their applications, and acknowledge and agree that they are solely responsible for all legal, regulatory and safety-related requirements concerning their products and any use of TI products in such safety-critical applications, notwithstanding any applications-related information or support that may be provided by TI. Further, Buyers must fully indemnify TI and its representatives against any damages arising out of the use of TI products in such safety-critical applications.

TI products are neither designed nor intended for use in military/aerospace applications or environments unless the TI products are specifically designated by TI as military-grade or "enhanced plastic." Only products designated by TI as military-grade meet military specifications. Buyers acknowledge and agree that any such use of TI products which TI has not designated as military-grade is solely at the Buyer's risk, and that they are solely responsible for compliance with all legal and regulatory requirements in connection with such use.

TI products are neither designed nor intended for use in automotive applications or environments unless the specific TI products are designated by TI as compliant with ISO/TS 16949 requirements. Buyers acknowledge and agree that, if they use any non-designated products in automotive applications, TI will not be responsible for any failure to meet such requirements.

Following are URLs where you can obtain information on other Texas Instruments products and application solutions:

### Products

Audio	<a href="http://www.ti.com/audio">www.ti.com/audio</a>
Amplifiers	<a href="http://amplifier.ti.com">amplifier.ti.com</a>
Data Converters	<a href="http://dataconverter.ti.com">dataconverter.ti.com</a>
DLP® Products	<a href="http://www.dlp.com">www.dlp.com</a>
DSP	<a href="http://dsp.ti.com">dsp.ti.com</a>
Clocks and Timers	<a href="http://www.ti.com/clocks">www.ti.com/clocks</a>
Interface	<a href="http://interface.ti.com">interface.ti.com</a>
Logic	<a href="http://logic.ti.com">logic.ti.com</a>
Power Mgmt	<a href="http://power.ti.com">power.ti.com</a>
Microcontrollers	<a href="http://microcontroller.ti.com">microcontroller.ti.com</a>
RFID	<a href="http://www.ti-rfid.com">www.ti-rfid.com</a>
RF/IF and ZigBee® Solutions	<a href="http://www.ti.com/lprf">www.ti.com/lprf</a>

### Applications

Communications and Telecom	<a href="http://www.ti.com/communications">www.ti.com/communications</a>
Computers and Peripherals	<a href="http://www.ti.com/computers">www.ti.com/computers</a>
Consumer Electronics	<a href="http://www.ti.com/consumer-apps">www.ti.com/consumer-apps</a>
Energy and Lighting	<a href="http://www.ti.com/energy">www.ti.com/energy</a>
Industrial	<a href="http://www.ti.com/industrial">www.ti.com/industrial</a>
Medical	<a href="http://www.ti.com/medical">www.ti.com/medical</a>
Security	<a href="http://www.ti.com/security">www.ti.com/security</a>
Space, Avionics and Defense	<a href="http://www.ti.com/space-avionics-defense">www.ti.com/space-avionics-defense</a>
Transportation and Automotive	<a href="http://www.ti.com/automotive">www.ti.com/automotive</a>
Video and Imaging	<a href="http://www.ti.com/video">www.ti.com/video</a>
Wireless	<a href="http://www.ti.com/wireless-apps">www.ti.com/wireless-apps</a>

TI E2E Community Home Page

[e2e.ti.com](http://e2e.ti.com)

Mailing Address: Texas Instruments, Post Office Box 655303, Dallas, Texas 75265  
Copyright © 2011, Texas Instruments Incorporated