

F

E

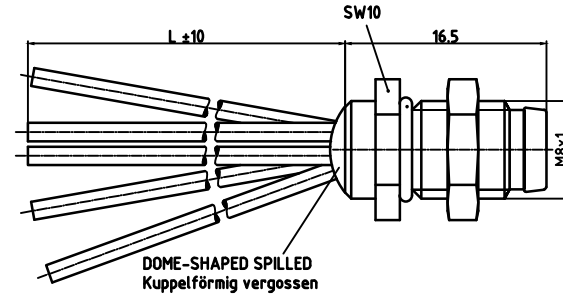
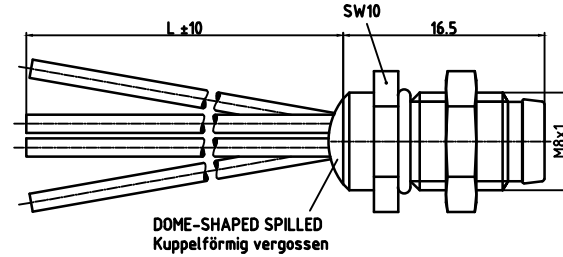
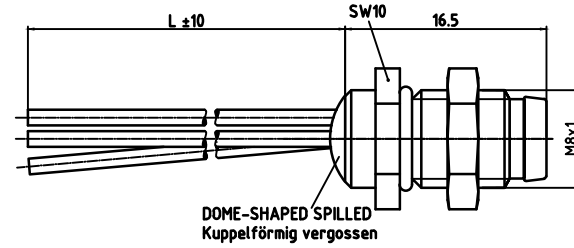
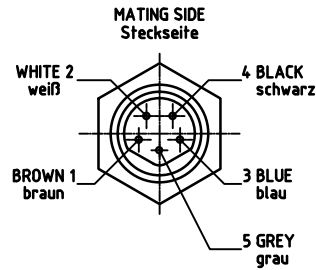
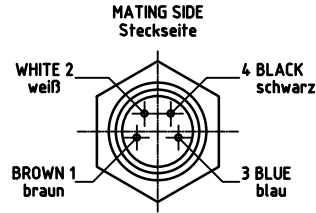
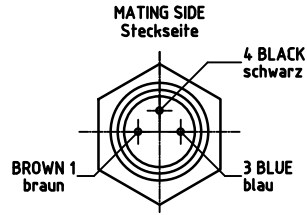
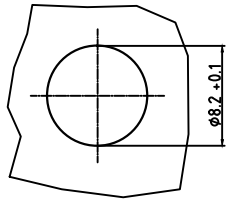
D

C

B

A

MOUNTING HOLE
Montageausschnitt



NOTES / Bemerkung:

1	CRIMP CONTACT Crimp Kontakt	WN-00003
2	CABLE LENGTH TOLERANCE Kabellängentoleranz	WN-00004
3	POTTING Verguss	ES-120000-019
4	PACKAGING FOR RECEPTACLE Verpackung für Gerätestecker	PK-120000-018
5	PIN-ASSIGNMENT Pin-Belegung	IEC 61076-2-104
6	WINDING SPECIFICATION Wickelvorschrift	ES-120000-020

SAP-NUMBER SAP-Nummer	OLD MATERIAL-NO. alte Artikel-Nr.	LENGTH Länge	REPLACED Ersatz für
1200905073	4R3F46E02C200	0.2 M	0908 036GM 09000
1200905103	4R3F46E02C500	0.5 M	0908 036GM 09003
1200905078	4R4F46E02C200	0.2 M	0908 046GM 09000
1200905081	4R5F46E02C200	0.2 M	0908 056GM 09000

DESCRIPTION EC NO: WEU2011-0400 10.02.10 DRWN:BBRAUCH CHKD:REISSNER APPR:REISSNER 2009/08/05	REVISION 2
---	---------------

QUALITY SYMBOLS ▽ = 0 ▽ = 0	GENERAL TOLERANCES (UNLESS SPECIFIED) mm INCH 4 PLACES ± --- ± --- 3 PLACES ± --- ± --- 2 PLACES ± 0.05 ± --- 1 PLACE ± 0.1 ± --- ANGULAR ± --- °
DRAFT WHERE APPLICABLE MUST REMAIN WITHIN DIMENSIONS	

DIMENSION STYLE MM	
DRAWN BY BB	DATE 2009/06/25
CHECKED BY JKO	DATE 2009/08/05
APPROVED BY FP	DATE 2009/08/05
MATERIAL NO. see table	
SIZE A3	THIS DRAWING CONTAINS INFORMATION THAT IS PROPRIETARY TO MOLEX INCORPORATED AND SHOULD NOT BE USED WITHOUT WRITTEN PERMISSION

SCALE 2:1	DESIGN UNITS METRIC	FIRST ANGLE PROJECTION
M8 MALE RECEPTACLES-XM M8 GERÄTESTECKER BACK		
MOLLEX MOLEX INCORPORATED		
DOCUMENT NO. SD-120090-004	SHEET NO. 1 OF 1	

F

E

D

C

B

A