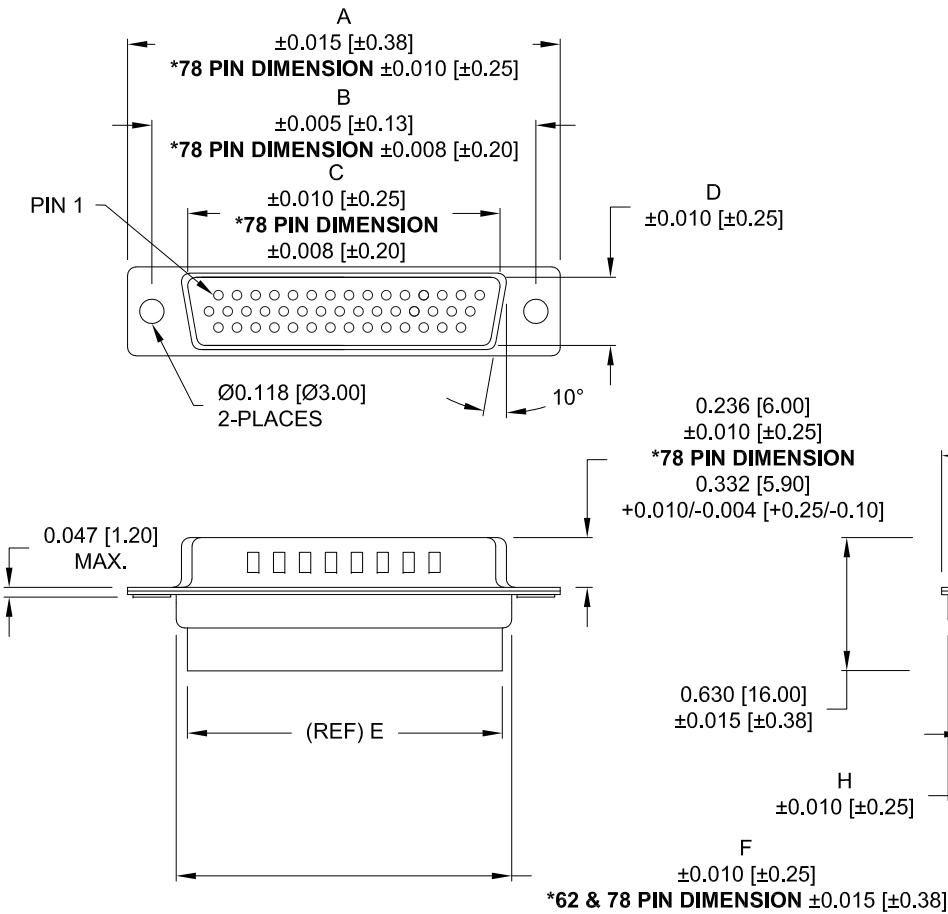


DESCRIPTION: MALE - CRIMP AND LOAD

**\*\*NOTE: CONTACTS MUST BE PURCHASED SEPARATELY\*\***



4 ROWS

**DIMENSIONS**

No. OF PINS	A	B	C	D	E	F	G	H
15	1.213	0.984	0.666	0.323	0.610	0.759	0.494	0.421
	30.81	24.99	16.92	8.20	15.50	19.28	12.55	10.70
26	1.541	1.312	0.994	0.323	0.964	1.083	0.494	0.421
	39.14	33.32	25.25	8.20	24.50	27.51	12.55	10.70
44	2.088	1.852	1.534	0.323	1.494	1.618	0.494	0.421
	53.04	47.04	38.96	8.20	37.95	41.10	12.55	10.70
62	2.729	2.500	2.182	0.319	2.142	2.272	0.494	0.421
	69.32	63.50	55.42	8.10	54.40	57.71	12.55	10.70
78	2.644	2.406	2.081	0.439	2.035	2.169	0.605	0.527
	67.16	61.11	52.86	11.15	51.70	55.10	15.37	13.40

**180-YYY-17YLYY0**

SERIES \_\_\_\_\_  
 POSITIONS \_\_\_\_\_  
 015  
 026  
 044  
 062  
 078  
 GENDER \_\_\_\_\_  
 1 = MALE  
 TERMINATION \_\_\_\_\_  
 7 = CRIMP & LOAD  
 SHELL PLATING \_\_\_\_\_  
 2 = TIN (DISCONTINUED)  
 3 = NICKEL (GROUND INDENTS)  
 RoHS COMPLIANT (230°C) \_\_\_\_\_  
 HARDWARE OPTIONS \_\_\_\_\_  
 00 = NO HARDWARE  
 01 = .157" CLINCH NUT (SOLDER SIDE)  
 02 = .250" CLINCH NUT (SOLDER SIDE)  
 03 = .250" CLINCH NUT (MATING SIDE)  
 PLATING OPTIONS \_\_\_\_\_  
 0 = NO CONTACTS

**MATERIAL:**

SHELL: NICKEL PLATED STEEL  
 INSULATOR: PBT +30% GF, UL 94 V-0

**ELECTRICAL:**

INSULATION RESISTANCE: 1,000 MOhms MIN.  
 VOLTAGE: 500VAC FOR 1 MINUTE  
 TEMPERATURE: -50° C TO 100° C

UNITS = inch[mm]

**DO NOT SCALE FROM DRAWING**



THESE DRAWINGS AND SPECIFICATIONS ARE THE PROPERTY OF NorComp AND SHALL NOT BE REPRODUCED, COPIED OR USED AS THE BASIS FOR THE MANUFACTURE OF SALE OF APPARATUS WITHOUT WRITTEN PERMISSION.

DRAWN:	DATE:
J KADEL	07-16-18

**NorComp**

SCALE:	SHEET	OF	REV
NTS	1	2	22
DWG NO. 180-YYY-17YLYY0			

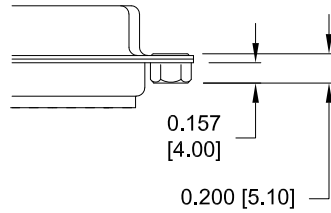
**RoHS COMPLIANT**

ALL CLINCH-NUTS ARE 4-40 INTERNAL THREADS

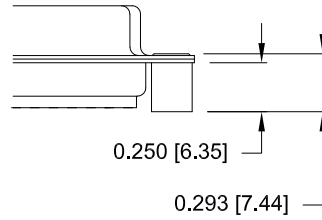
UNITS = inch[mm]

TOLERANCE:  
ALL DIMENSIONS ARE ±0.010

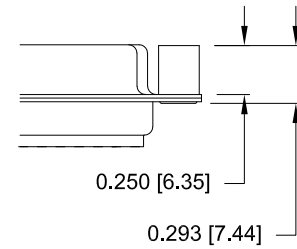
01X ..... 0.157" (SOLDER SIDE)



02X ..... 0.250" (SOLDER SIDE)



03X..... 0.250" (MATING SIDE)



DO NOT SCALE FROM DRAWING



THESE DRAWINGS AND SPECIFICATIONS ARE THE PROPERTY OF NorComp AND SHALL NOT BE REPRODUCED, COPIED OR USED AS THE BASIS FOR THE MANUFACTURE OF SALE OF APPARATUS WITHOUT WRITTEN PERMISSION.

DRAWN:  
J KADEL

DATE:  
07-16-18

**NorComp**

SCALE: NTS SHEET 2 OF 2 REV 22

DWG NO. 180-YYY-17YLYY0

RoHS COMPLIANT