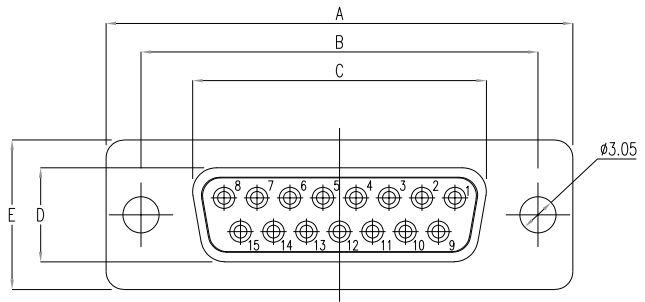
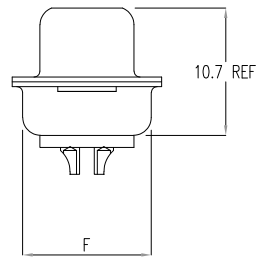
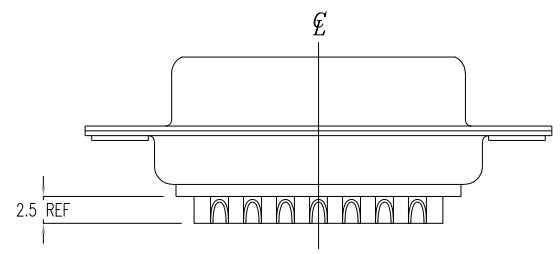


DESCRIPTION: FEMALE - SOLDER CUP / MACHINED - ECONOMY



DIMENSIONS(mm)						
SIZE	A ^{+0.39} _{-0.39}	B ^{+0.25} _{-0.25}	C ^{+0.25} _{-0.25}	D ^{+0.25} _{-0.34}	E ^{+0.38} _{-0.38}	F ^{+0.25} _{-0.25}
9	30.81	24.99	16.33	7.90	12.55	10.80
15	39.19	33.32	24.66	7.90	12.55	10.80
25	53.04	47.04	38.38	7.90	12.55	10.80
37	69.32	63.50	54.84	7.90	12.55	10.80
50	67.00	61.10	52.20	10.90	15.40	13.30

WILL ACCEPT 26-20 AWG WIRE



MATERIAL:

- SHELL: NICKEL OR TIN PLATED STEEL
- INSULATOR: PA6T, UL 94 V-0
- PROCESS TEMP.: 260°C
- CONTACT: BRASS

ELECTRICAL:

- CURRENT RATING: 5 AMPS
- CONTACT RESISTANCE: 15 mOhms Max.
- INSULATION RESISTANCE: 1,000 MOhms min.
- VOLTAGE: 500VAC FOR 1 MINUTE
- TEMPERATURE: -55° C TO 125° C

RoHS COMPLIANT

UNITS = mm

DO NOT SCALE FROM DRAWING

172-EYY-20YRYY1

SERIES _____

POSITIONS _____

- E09
- E15
- E25
- E37
- E50

GENDER _____

- 2 = FEMALE

TERMINATION _____

- 0 = SOLDER CUP

SHELL PLATING _____

- 2 = TIN (N/A FOR HW "01" / "02" / "03")
- 3 = NICKEL

RoHS COMPLIANT _____

HARDWARE OPTIONS _____

- 00 = NO HARDWARE
- 01 = .098" CLINCH NUT (SOLDER SIDE)
- 02 = .236" CLINCH NUT (SOLDER SIDE)
- 03 = .236" CLINCH NUT (MATING SIDE)
- 05 = .237" 4-40 BOARD LOCK
- 91 = .237" 4-40 SPACER/ BOARD LOCK

PLATING OPTIONS _____

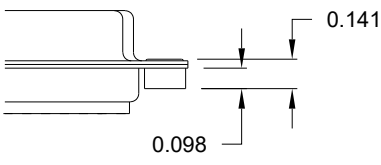
- 1 = GOLD FLASH
- 2 = 30µ" GOLD

	THESE DRAWINGS AND SPECIFICATIONS ARE THE PROPERTY OF NorComp AND SHALL NOT BE REPRODUCED, COPIED OR USED AS THE BASIS FOR THE MANUFACTURE OF SALE OF APPARATUS WITHOUT WRITTEN PERMISSION.		DRAWN: PAM JENKINS	DATE: 11-28-05
	<h1>NorComp</h1>		SCALE: NTS	SHEET 1 OF 2
DWG NO. 172-EYY-20YRYY1			REV 15	

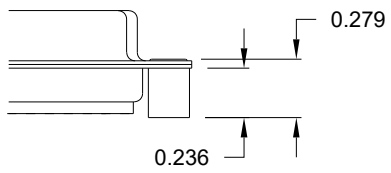
TOLERANCE:
ALL DIMENSIONS ARE ±0.010

ALL CLINCH-NUTS ARE 4-40 INTERNAL THREADS

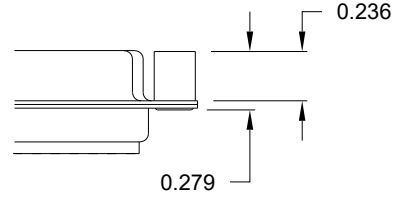
01X 0.098" (SOLDER SIDE)



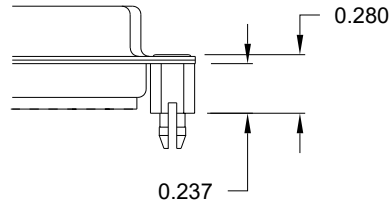
02X 0.236" (SOLDER SIDE)



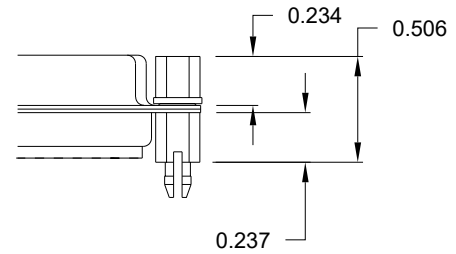
03X..... 0.236" (MATING SIDE)



05X 0.237" (SOLDER SIDE)



91X 0.237" (SOLDER SIDE)



NOTE: 4-40 FEMALE SCREW LOCK IS REMOVABLE

UNITS = INCH

DO NOT SCALE FROM DRAWING



THESE DRAWINGS AND SPECIFICATIONS ARE THE PROPERTY OF NorComp AND SHALL NOT BE REPRODUCED, COPIED OR USED AS THE BASIS FOR THE MANUFACTURE OF SALE OF APPARATUS WITHOUT WRITTEN PERMISSION.

DRAWN: PAM JENKINS	DATE: 11-28-05
------------------------------	--------------------------

SCALE: NTS	SHEET 2	OF 2	REV 15
----------------------	-------------------	----------------	------------------

DWG NO. **172-EYY-20YRY1**

NorComp

RoHS COMPLIANT