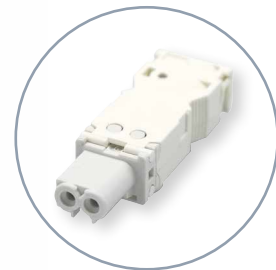


## REPORT

### 7L Series LED panel light



Design by MINELLI | FOSSATI



Connector  
Type 07L.11  
included in  
the packaging

## LED light for electrical panels with magnetic mounting

- Mounting "Two in one" - Direct magnetic mounting or through a screw-fixed metallic support
- Brightness levels: 600 or 1200 lumens
- Versions with: **1** - direct switching  
**2** - movement detector  
**3** - ON/OFF switch
- Power supply - Multi-voltage: 12...48 V AC/DC and 110...240 V AC/DC
- Available with push-in terminals or plug-in terminals

Approvals



Type 7L.43 (600 lumens)  
Type 7L.46 (1200 lumens)

- Direct magnetic mounting or through a screw-fixed metallic support
- Power supply: 12...48 V AC/DC and 110...240 V AC/DC
- Nominal power consumption: 6 W (600 lm), 9 W (1200 lm)
- Radiation angle: 120°
- Colour temperature: 5,000 K
- Protection category: IP20

Direct switching



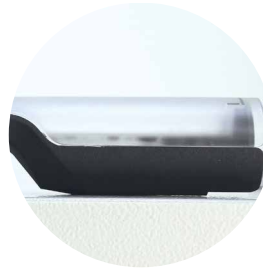
Switching via ON/OFF switch



Switching via movement detector



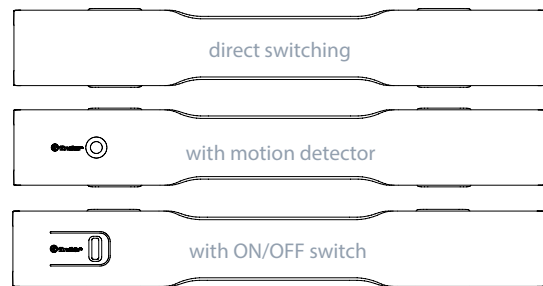
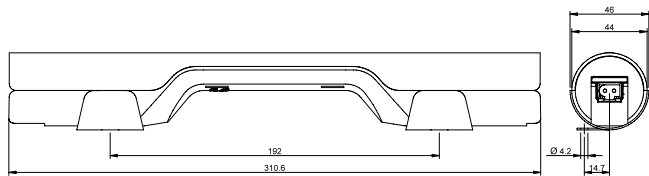
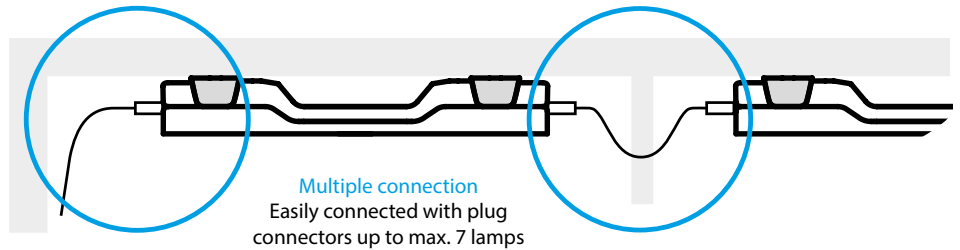
Magnetic fixing direct to metallic panel



Magnetic fixing via screw-fixed metallic support



Quick and simple wiring system via **push-in terminals** for the connection to a single unit, or via **plug-in terminals** for the connection to a single or multiple units.



NEW

| Code Lamps       | Lumen | Code Lamps              | Lumen       | Supply voltage           | Switching               | Connections       |
|------------------|-------|-------------------------|-------------|--------------------------|-------------------------|-------------------|
| 7L.43.0.024.0100 | 600   | <b>7L.46.0.024.0100</b> | <b>1200</b> | 024 = (12...48)V AC/DC   | <b>Direct switching</b> | Push-in terminals |
| 7L.43.0.024.0200 | 600   | <b>7L.46.0.024.0200</b> | <b>1200</b> | 024 = (12...48)V AC/DC   | <b>Direct switching</b> | Plug-in terminals |
| 7L.43.0.230.0100 | 600   | <b>7L.46.0.230.0100</b> | <b>1200</b> | 230 = (110...240)V AC/DC | <b>Direct switching</b> | Push-in terminals |
| 7L.43.0.230.0200 | 600   | <b>7L.46.0.230.0200</b> | <b>1200</b> | 230 = (110...240)V AC/DC | <b>Direct switching</b> | Plug-in terminals |
| 7L.43.0.024.1100 | 600   | 7L.46.0.024.1100        | 1200        | 024 = (12...48)V AC/DC   | Via ON/OFF switch       | Push-in terminals |
| 7L.43.0.024.1200 | 600   | 7L.46.0.024.1200        | 1200        | 024 = (12...48)V AC/DC   | Via ON/OFF switch       | Plug-in terminals |
| 7L.43.0.024.2100 | 600   | 7L.46.0.024.2100        | 1200        | 024 = (12...48)V AC/DC   | Via movement detector   | Push-in terminals |
| 7L.43.0.024.2200 | 600   | 7L.46.0.024.2200        | 1200        | 024 = (12...48)V AC/DC   | Via movement detector   | Plug-in terminals |
| 7L.43.0.230.1100 | 600   | 7L.46.0.230.1100        | 1200        | 230 = (110...240)V AC/DC | Via ON/OFF switch       | Push-in terminals |
| 7L.43.0.230.1200 | 600   | 7L.46.0.230.1200        | 1200        | 230 = (110...240)V AC/DC | Via ON/OFF switch       | Plug-in terminals |
| 7L.43.0.230.2100 | 600   | 7L.46.0.230.2100        | 1200        | 230 = (110...240)V AC/DC | Via movement detector   | Push-in terminals |
| 7L.43.0.230.2200 | 600   | 7L.46.0.230.2200        | 1200        | 230 = (110...240)V AC/DC | Via movement detector   | Plug-in terminals |