

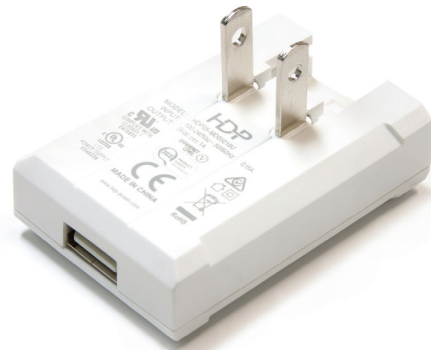
MEDITE

Global 12W Switch Mode Power Adapter for Medical & ITE Applications



Features

- Certified to IEC 62368-1 and IEC 60601 standards
- Interchangeable inputs for global markets
- Slim profile design with foldable US blades
- USB or fixed cord output
- Available in custom colors
- One year warranty



Electrical Specifications

INPUT VOLTAGE	90 ~ 264 VAC
FREQUENCY	47 ~ 63Hz
MAXIMUM OUTPUT POWER	12W
INRUSH CURRENT	Max 50A @ 230V Cold Start
EFFICIENCY	Meets CEC VI
LOW STANDBY POWER	Under 100mW

OVER VOLTAGE / SHORT CIRCUIT PROTECTION

Model	Output (V)	Output (A)	Ripple
HDP12-MD05024U	5.0V	2400mA	100mV
HDP12-MDXXXYYC	5.0V ~ 9.0V	1330mA Max	100mV
HDP12-MDXXXYYC	9.1V ~ 12.0V	1000mA Max	120mV
HDP12-MDXXXYYC	12.1V ~ 15.0V	800mA Max	150mV
HDP12-MDXXXYYC	15.1V ~ 18.0V	660mA Max	180mV
HDP12-MDXXXYYC	18.1V ~ 24.0V	500mA Max	240mV
HDP12-MDXXXYYC	24.1V ~ 28.0V	420mA Max	280mV

Model: XXX = Voltage, YY = Current, C = Fixed Cord, U = USB
 Optional global input adapters for UK, AU, EU, KC



Environmental & Reliability

OPERATING TEMPERATURE	0°C ~ 50°C
STORAGE TEMPERATURE	-20°C ~ 85°C
HUMIDITY	5% ~ 95% Non-Condensing
LEAKAGE CURRENT	0.15mA @ 264V & 63Hz
HI-POT	3000VAC 60 Sec
MTBF	50k Minimum Hours at 25°C

Safety, Efficiency, & EMC Standards

IEC 62368-1
 IEC 60601-1
 UL/cUL
 CE
 CB
 SAA

C-Tick
 FCC
 RoHS
 REACH
 CEC VI

